

Supplementary Materials

Procedure

The following are the instructions given to participants at the beginning of the experiment:

“This is information I want you to remember. This is an individual who goes by the name of Kevin (participants shown face picture A or face picture B, but not both). He is a known drug dealer in this area and the police are looking for him. This is the type of car that he drives (participants shown car photo A or car photo B, but not both). This is the restaurant where he likes to hang out (participants shown restaurant photo A or photo B, but not both). You have met Kevin twice: once at the restaurant; once at your home when you were having a party. He attended the party with a friend of yours who he is dating. His family is known to have connections to organized crime. It is important that you not divulge this information to anyone. It is very important that when you are interviewed by my colleague that he not be able to figure out what you know. Please try to appear as honest and forthcoming as possible so as not to raise suspicion.”

The following are the instructions given to participants by the interviewer:

“My boss believes that you may know something about the person we are looking for. I don’t know if you know anything or not, but I am going to show you some photographs of men’s faces. If you recognize the man please tell me. If you do not recognize any of the people I show you, then I will ask you to ‘just guess’ as to which one might be the person we are looking for. Again, if you don’t know, it is alright to just make a guess.”

Results

Tables S2 through S4 report descriptive and inferential statistics equivalent to those found in Table 1 of the Main Paper, but separated for each of the three pieces of information (i.e., Kevin's face, car, and favorite restaurant).

Table S1.

Mean PPVT-4 Percentiles and PPVT-4 Mediation Test Statistics for each Ethnic Group.

95% Confidence Intervals were Bootstrapped with 5000 resamples.

Ethnic Group	PPTV-4 Percentile		PPVT-4 Mediation Test			
	<i>M</i>	<i>SD</i>	<i>B</i>	<i>Z</i>	<i>p</i>	95%CIs
Afghani	7.90	6.83	.003	.149	.881	-.023 .179
British	48.9	26.85	-.044	-1.11	.267	-.153 .018
Chinese	16.00	22.21	.022	.797	.426	-.007 .207
Indian	25.31	21.17	.002	.182	.855	-.021 .105
Iraqi	10.55	10.04	.046	.999	.318	-.026 .354
Lebanese	16.66	16.64	-.001	-.069	.945	-.081 .053
Pakistani	18.93	13.50	.003	.180	.857	-.026 -.061
Polish	15.10	18.48	-.100	-1.25	.213	-.283 -.010

Note: Due to technical failure, PPVT data for seven Lebanese participants was missing. Thus, calculations for this group are based on $n = 35$.

Table S2.

Mean and SD of Target Hits for the Faces FCT sets, together with Classification

Accuracy Statistics.

Ethnic Group	Mean Number of Target Hits (SD)		Classification Accuracy				
	Truth	Conceal	AUC	SE	<i>p</i>	95% CI Upper	95% CI Lower
Afghani	0.76 (1.30)	1.45 (2.22)	.586	.092	.365	.405	.766
British	0.84 (1.12)	1.52 (2.16)	.570	.091	.448	.391	.749
Chinese	1.30 (2.34)	4.19 (3.20)	.788	.073	.002	.645	.931
Indian	.857 (1.35)	2.57 (2.96)	.673	.084	.054	.509	.838
Iraqi	0.61 (1.69)	2.24 (1.89)	.776	.079	.003	.622	.931
Lebanese	0.33 (0.91)	3.00 (2.65)	.850	.063	.000	.726	.974
Pakistani	0.81 (1.99)	2.05 (3.08)	.625	.090	.176	.449	.802
Polish	0.60 (0.99)	3.27 (2.85)	.811	.067	.001	.680	.943

Table S3.

Mean and SD of Target Hits for the Cars FCT sets, together with Classification Accuracy Statistics.

Culture	Mean Number of Target Hits (SD)		Classification Accuracy				
	Truth	Conceal	AUC	SE	<i>p</i>	95% CI Upper	95% CI Lower
Afghani	1.18 (1.85)	3.00 (3.19)	.663	.088	.084	.491	.835
British	2.05 (2.76)	2.86 (3.47)	.541	.092	.655	.360	.722
Chinese	1.35 (1.76)	4.33 (4.05)	.694	.083	.034	.531	.857
Indian	.810 (1.57)	3.90 (3.25)	.794	.071	.001	.655	.932
Iraqi	0.89 (1.91)	4.10 (2.74)	.853	.065	.000	.727	.980
Lebanese	0.19 (0.68)	4.62 (3.56)	.905	.051	.000	.805	1.00
Pakistani	0.48 (1.08)	2.47 (2.82)	.718	.083	.018	.555	.881
Polish	1.25 (2.10)	2.77 (3.26)	.615	.088	.203	.443	.786

Table S4.

Mean and SD of Target Hits for the Restaurants FCT sets, together with Classification

Accuracy Statistics.

Culture	Mean Hits		Classification Accuracy				
	Truth	Conceal	AUC	SE	<i>p</i>	95% CI Upper	95% CI Lower
Afghani	0.76 (1.44)	4.05 (2.89)	.849	.064	.000	.724	.974
British	1.42 (2.87)	3.90 (2.91)	.776	.080	.003	.618	.933
Chinese	1.50 (2.33)	4.38 (3.50)	.761	.075	.004	.614	.908
Indian	0.86 (1.59)	4.29 (3.55)	.793	.071	.001	.653	.932
Iraqi	0.89 (1.81)	3.86 (2.61)	.836	.068	.000	.702	.970
Lebanese	0.19 (0.68)	3.33 (3.29)	.806	.070	.001	.668	.944
Pakistani	0.67 (1.16)	2.95 (3.27)	.704	.085	.027	.538	.870
Polish	0.50 (0.68)	4.00 (2.96)	.868	.058	.000	.754	.982

Ready

























Cars





















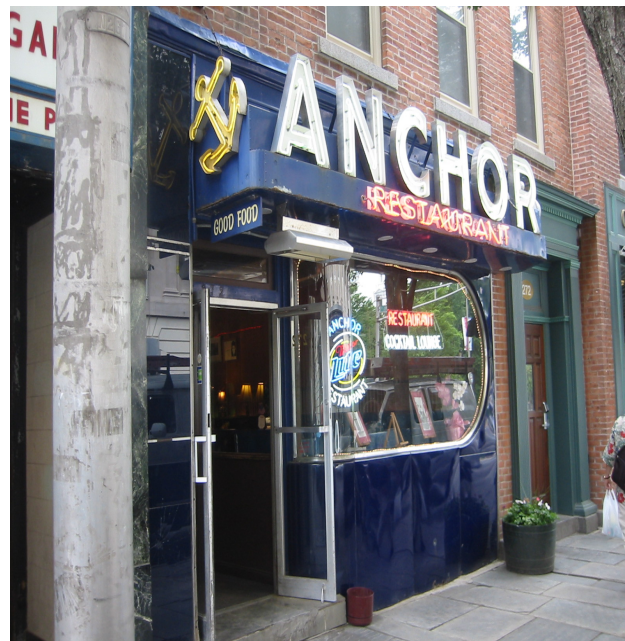


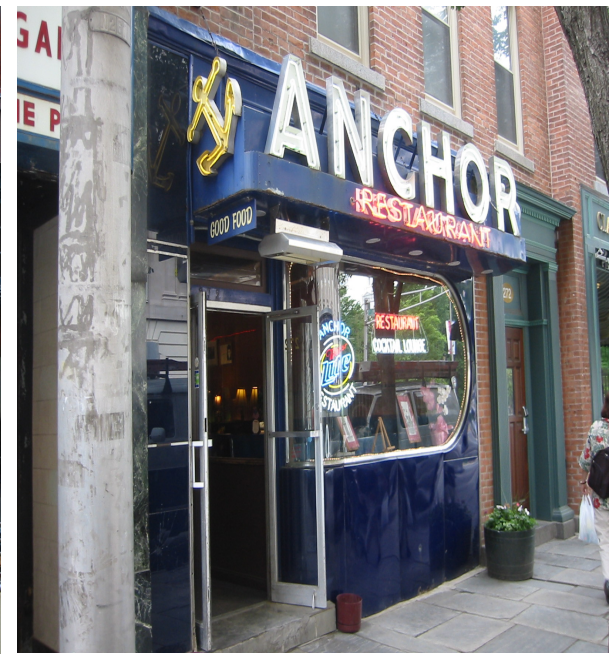


Places



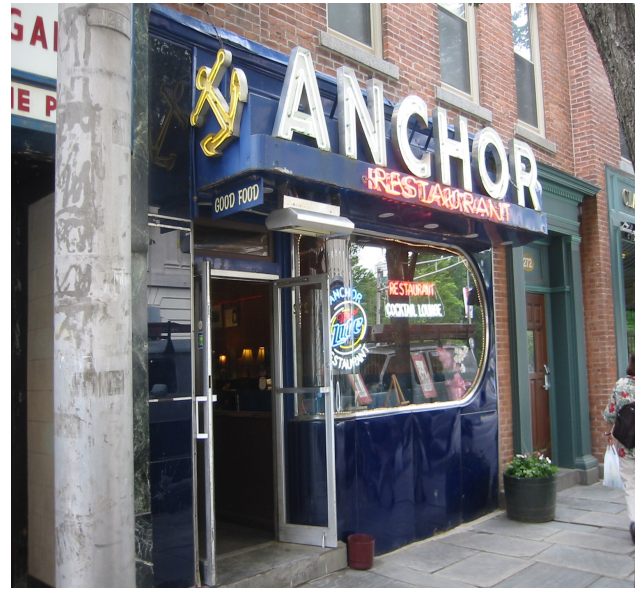


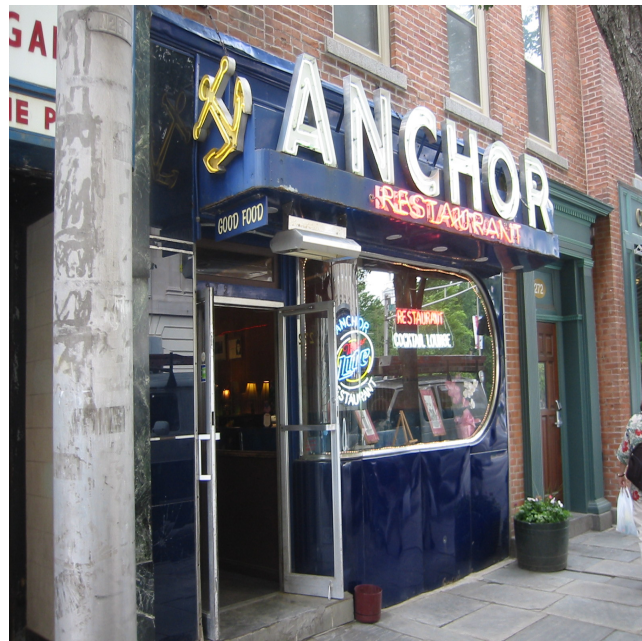






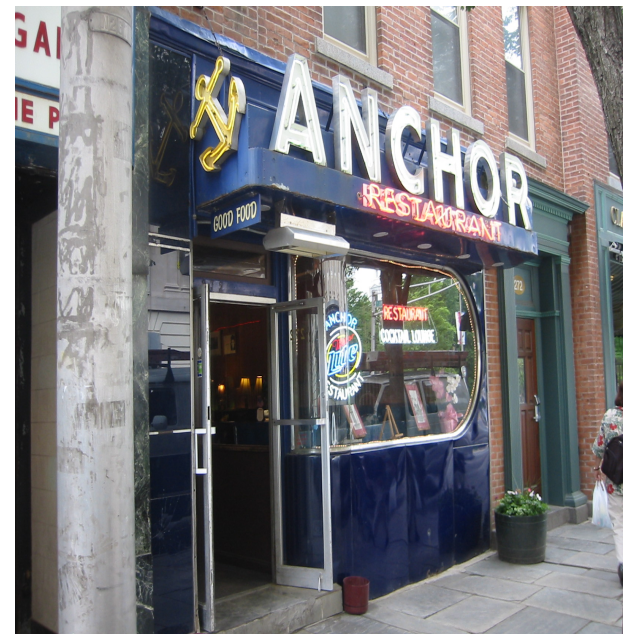


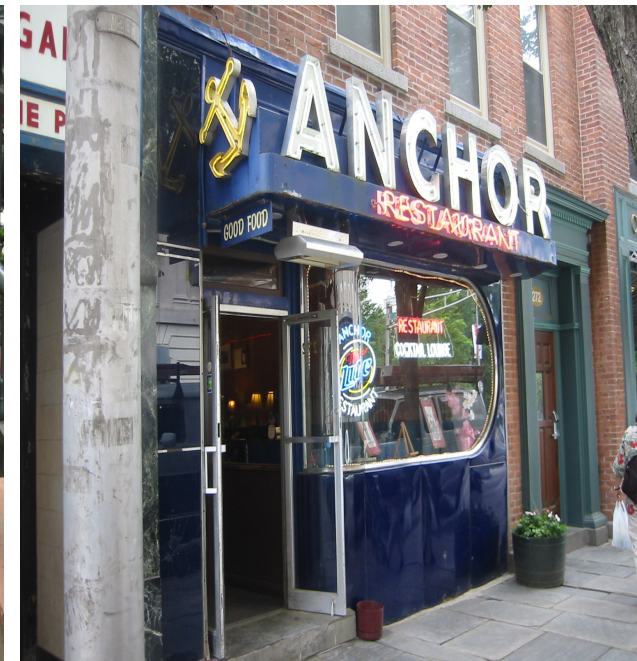












Thank you.