

# Morecambe Bay Tidal Barrage

Tuesday 20th Oct 2020 18:00 BST - Webinar

<https://www.workcast.com/register?cpak=#####>

Thank you for joining this event.

We will commence promptly at 18:00 BST.

Presentation slides will be shared after the event.

Please use "Ask a Question" button to submit your questions.



**EUR ING Professor**  
**George Aggidis**  
Professor and Head of  
Energy Engineering

Power  
Division  
NW Centre

Greater  
Manchester  
Area

[www.imeche.org](http://www.imeche.org)

Institution of  
**MECHANICAL  
ENGINEERS**

[www.lancaster.ac.uk](http://www.lancaster.ac.uk)



<http://nearyou.imeche.org/near-you/UK/North-Western>

<https://www.linkedin.com/in/IMechE-North-Western>

1. Introduction
2. Resource
3. Past
4. Present
5. Next Steps
6. Conclusions



1. Introduction
2. Resource
3. Past
4. Present
5. Next Steps
6. Conclusions





# UK Energy & Environment

## Politics last 3 weeks: PM turned green



“Nearly a third of UK land would be protected for nature”

Boris Johnson, UN Summit on Biodiversity 30 Sept 2020

Boris Johnson's pledge:

“Offshore wind farms will produce enough electricity to power all UK homes within a decade”

It is reported in the news in Oct 2020

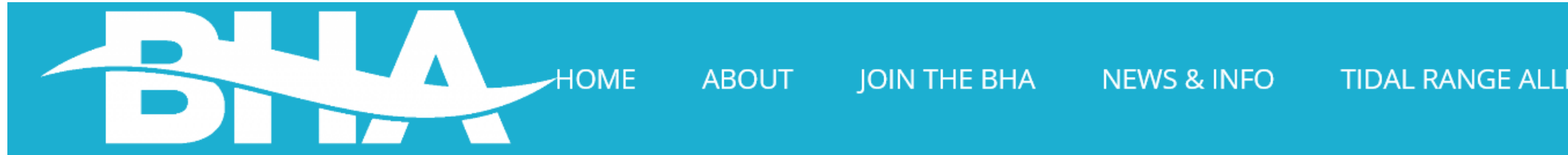


Beatrice, Scotland (588 MW)  
Powers ~ 450,000 properties

Delivering up to 40 gigawatts of power on the grid by 2030 requires action **in this Parliament**

The question now is to find the right catalyst for the **PM to put finance and targets** to these ideas





For firm power, we need look no further than our coast. The UK is blessed with some of the world's best tidal range resources. Tidal range projects, with barrages and impoundments proposed along much of the UK's west coast, will deliver totally reliable, industrial scale low-carbon power generation and help maintain grid security and stability and protect coastal communities from storm surges and rising sea levels and provide thousands of jobs in places where employment is hard to find.

With an operating life of over 120 years, at least double that of a nuclear plant and three to four times the life of wind and solar farms, and many whole-system benefits, tidal range energy generation is cost competitive and should have a significant role to play in the UK's Green Recovery.



6 Oct 2020

Henry Dixon,  
Chair, 2020



HRH Prince William said he aimed to take up the environmental baton from his father HRH Prince Charles 8 Oct 2020



Professor George Aggidis and HRH Prince Philip The Duke of Edinburgh a great supporter of the Environment and Nature Conservation



Professor George Aggidis and HRH The Prince of Wales discuss Renewables & Sustainability

- The search is on for 50 solutions to the world's gravest environmental problems by 2030.
- With £50m to be awarded over a decade, the "Earthshot Prize" is the biggest environmental prize ever.
- The Earthshot Prize will make five awards of £1m each year for 10 years.
- These "Earthshots" are intended as "universal goals to repair our planet by 2030" and will go to the best and most innovative ideas to help:

1. Protect and restore nature
2. Clean our air
3. Revive our oceans
4. Build a waste-free world
5. Fix our climate



- HRH Prince William and Sir David Attenborough have joined forces to launch on 8 Oct 2020 what they hope will become the "Nobel Prize for environmentalism"
- "I think the dotty person now would be the person who doesn't believe in climate change," HRH Prince William
- The prize launched by Sir David and HRH Prince William is looking for "brilliant" projects to save the planet

- Global pandemic
- One global community
- Most vulnerable in our society affected
- Exposed the serious weaknesses of our current systems
- We need to rebuild a society
- Sustainable, green jobs
- An end to fuel poverty
- Safeguard our planet and the health of all

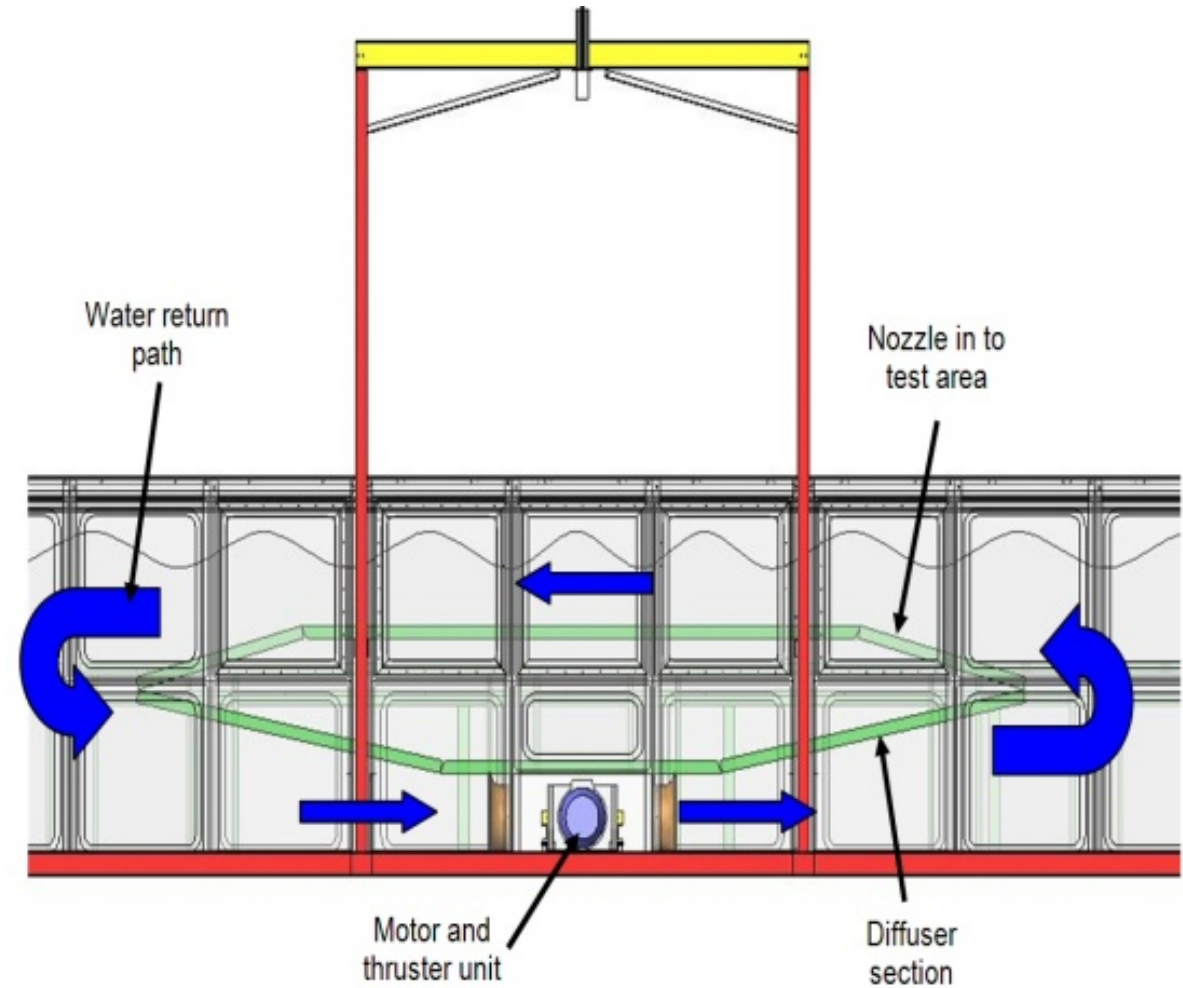
**Morecambe Bay Tidal Barrage is a vital step in getting us closer to a greener, safer, fairer future**



- Research on Renewable Energy & Fluid Machinery
  - Generic & Applied
- Energy & Renewables
  - Computational & Experimental Modelling
  - Device Development & Power take off
  - Computational Fluid Dynamics & Control
  - Economics, Resource & Condition Monitoring
- Novel Topology Fluid Machinery & Turbines
  - Computational Fluid Dynamics, Turbine Design & Analysis
  - Direct Drive & In Line Turbines
  - Siphonic Low Head & Low Cost Turbine Research
  - Fluid Machinery reliability & Energy Efficiency
- Funded by EPSRC, Carbon Trust, EU, RDAs, Utilities and Industry



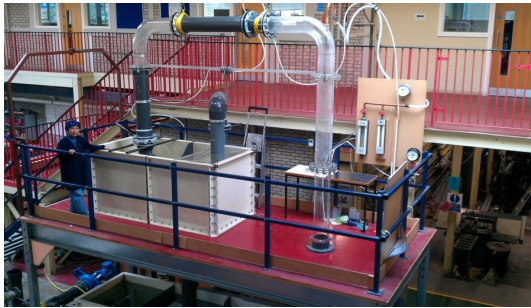
Lancaster University Engineering Building



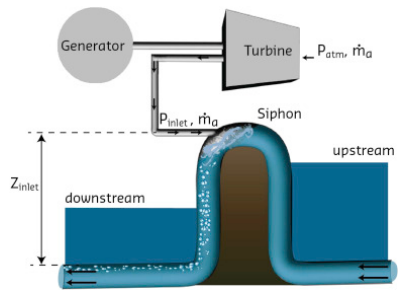


**Waters, S. and Aggidis, G., 2016.** Tidal range technologies and state of the art in review. *Renewable and Sustainable Energy Reviews*, 59, pp.514-529.

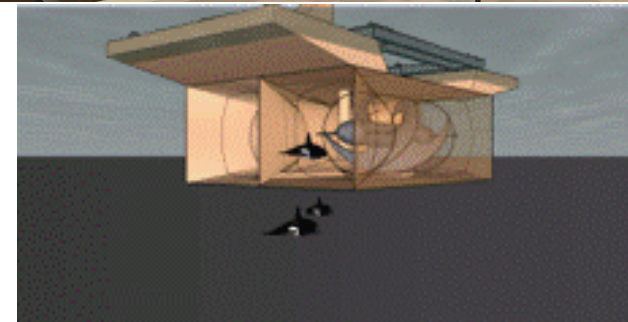
**Waters, S. and Aggidis, G.A., 2015.** Over 2000 years in review: Revival of the Archimedes screw from pump to turbine. *Renewable and Sustainable Energy Reviews*, 51, pp.497-505.



Lancaster University  
Research on Low Head Hydro and Archimedes Screw Turbines for Tidal Applications



Holland Estuaries

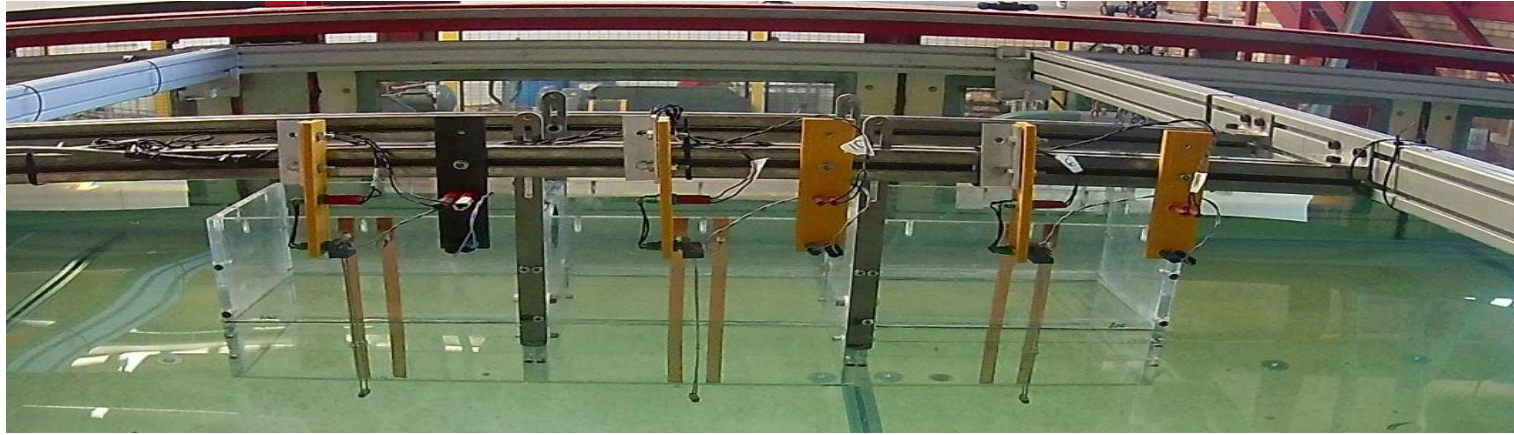


Indonesia

<https://www.tidalbridge.com/>

**Widden, M.B., French, M.J. and Aggidis, G.A., 2004.** Economic energy from low head water by conversion to air pressure. In *IMechE Conference Transactions* (Vol. 6, pp. 41-49).





## waves2watts

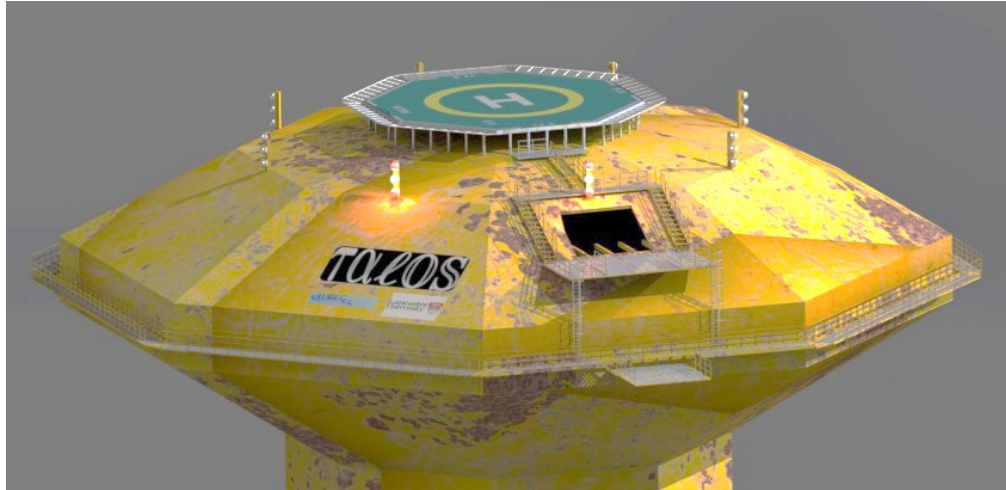
*Lancaster University Research on W2W*

*Multi Oscillating Water Column*

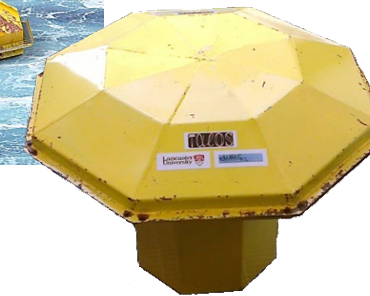
*Wave Energy Converter and*

*Floating Breakwater.*

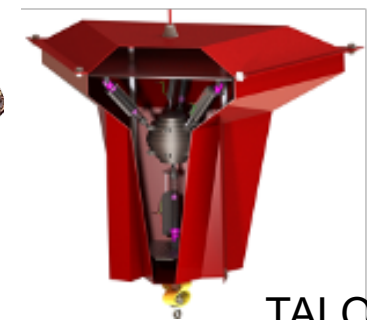
**Doyle, S. and Aggidis, G.A., 2019.** Development of multi-oscillating water columns as wave energy converters. *Renewable and Sustainable Energy Reviews*, 107, pp.75-86.



TALOS I



TALOS Multi Axis Wave Energy Converter System

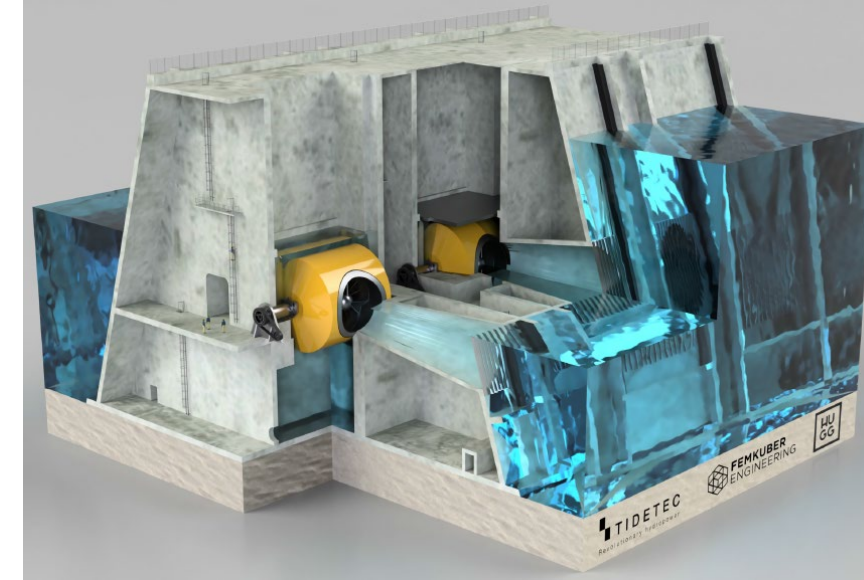
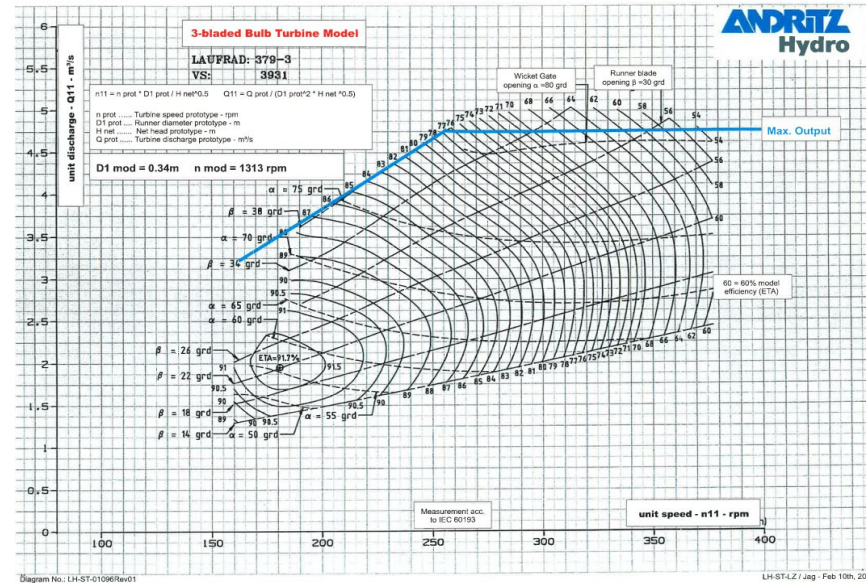


TALOS II



**Aggidis, G.A. and Taylor, C.J., 2017.** Overview of wave energy converter devices and the development of a new multi-axis laboratory prototype. *IFAC-PapersOnLine*, 50(1), pp.15651-15656.





*Lancaster University  
Research with Infinities  
Global on Tidal Current  
and Hydrogen Storage  
Technology*



*Smart sea water  
storage to provide  
flexibility services to  
the energy network*

**Petley, S. and Aggidis, G., 2016.** Swansea Bay tidal lagoon annual energy estimation. *Ocean Engineering*, 111, pp.348-357.



*Before the Low Head Hydro Plant*



*After the completion of the Low Head Hydro Plant*

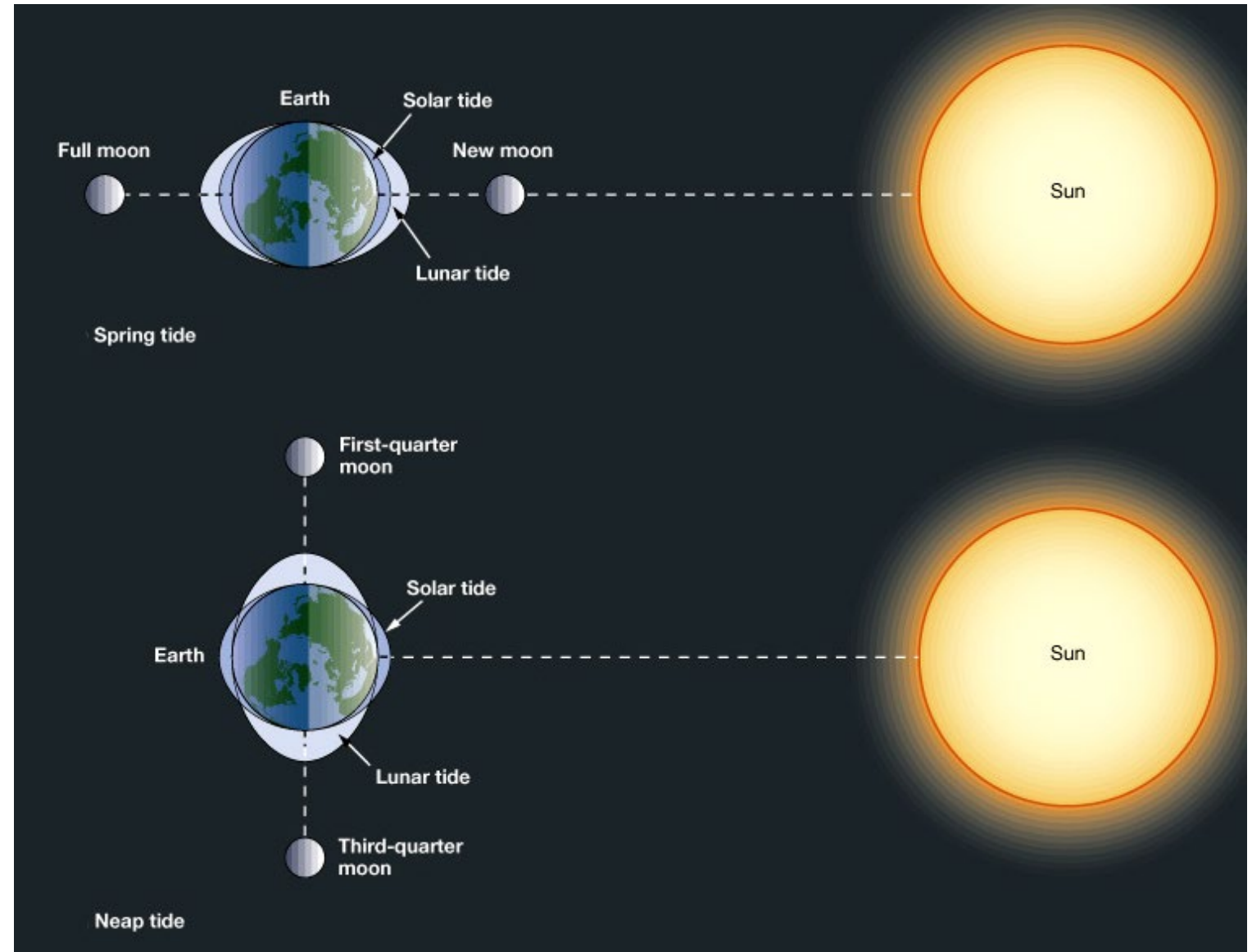


1. Introduction
2. Resource
3. Past
4. Present
5. Next Steps
6. Conclusions



# Earth-Moon-Sun Gravity

Tidal energy exploits the **natural ebb and flow** of coastal tidal waters caused principally by the interaction of the **gravitational fields of the earth, moon and sun**.



# Kinetic Energy

The flows due to flood and ebb currents creates **KINETIC ENERGY**.



- Power extracted from kinetic energy of flowing water:

$$P = \frac{1}{2} \rho A U^3$$

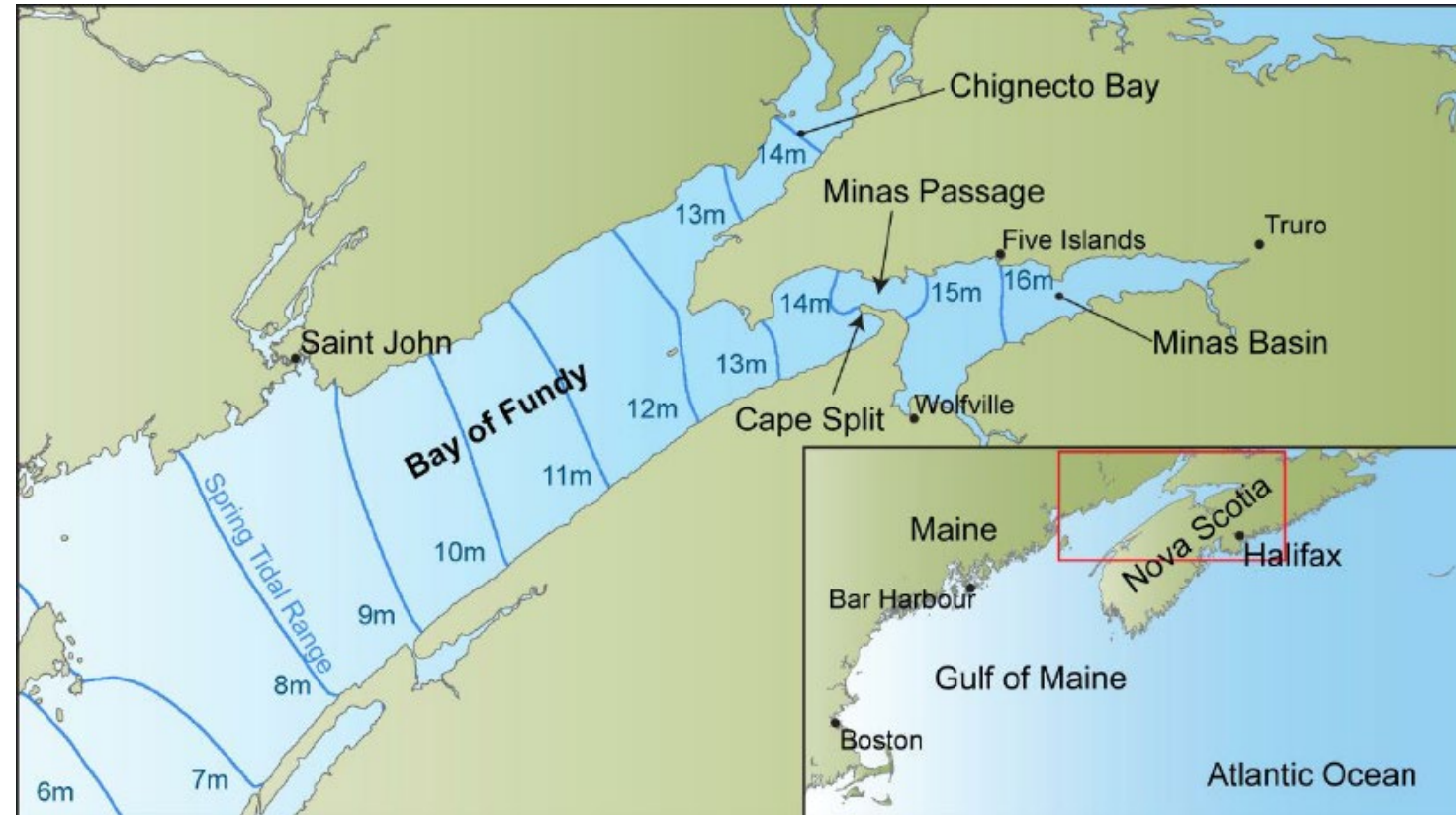
- Water 800 times denser than air.
- Turbines similar to wind turbines, but:
  - the blades are smaller
  - turn more slowly and
  - withstand greater forces and movements





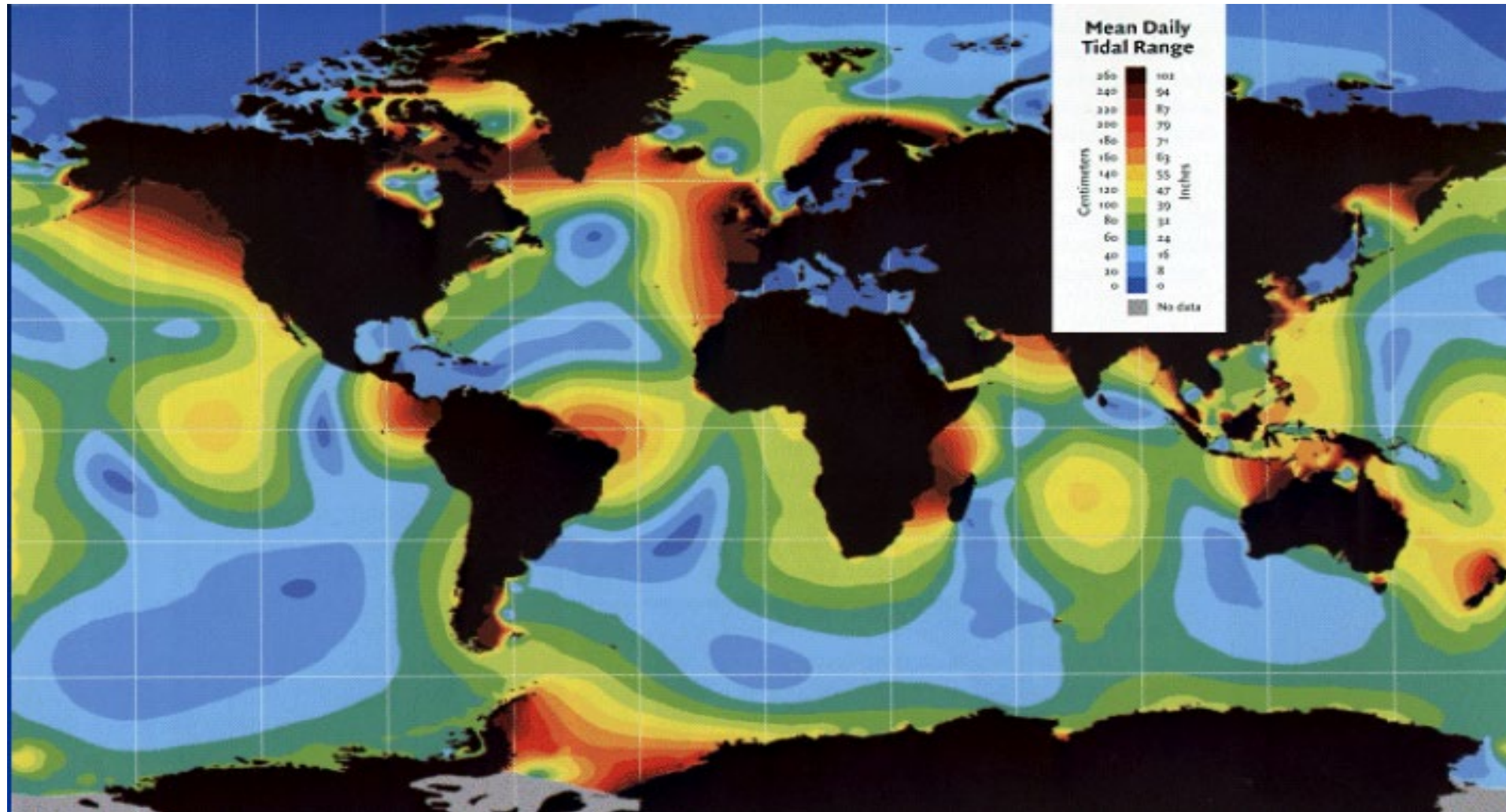
The rise and fall of the tides up to 16 m creates **POTENTIAL ENERGY**.

- Tidal energy is **focused** by **shape and shallowness** of bay.
- The Bay of Fundy in Canada has the **greatest tidal range on the planet**.
- Maximum spring tidal range in **Minas Basin 16.2 m**.

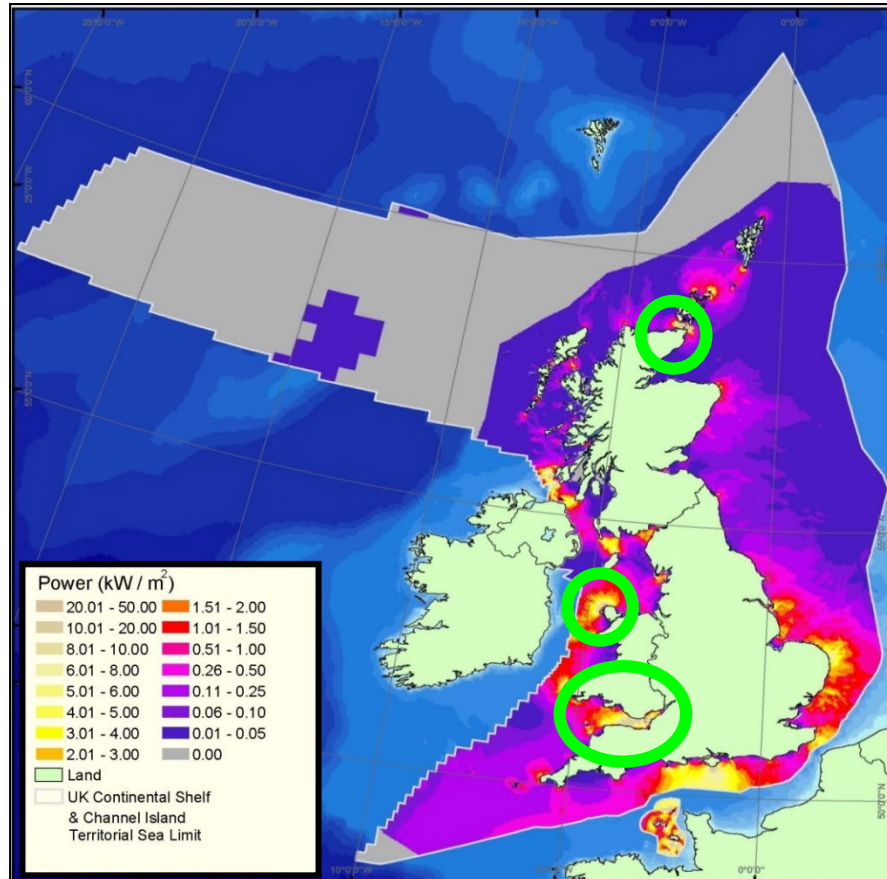


# Global Distribution of Tidal Range

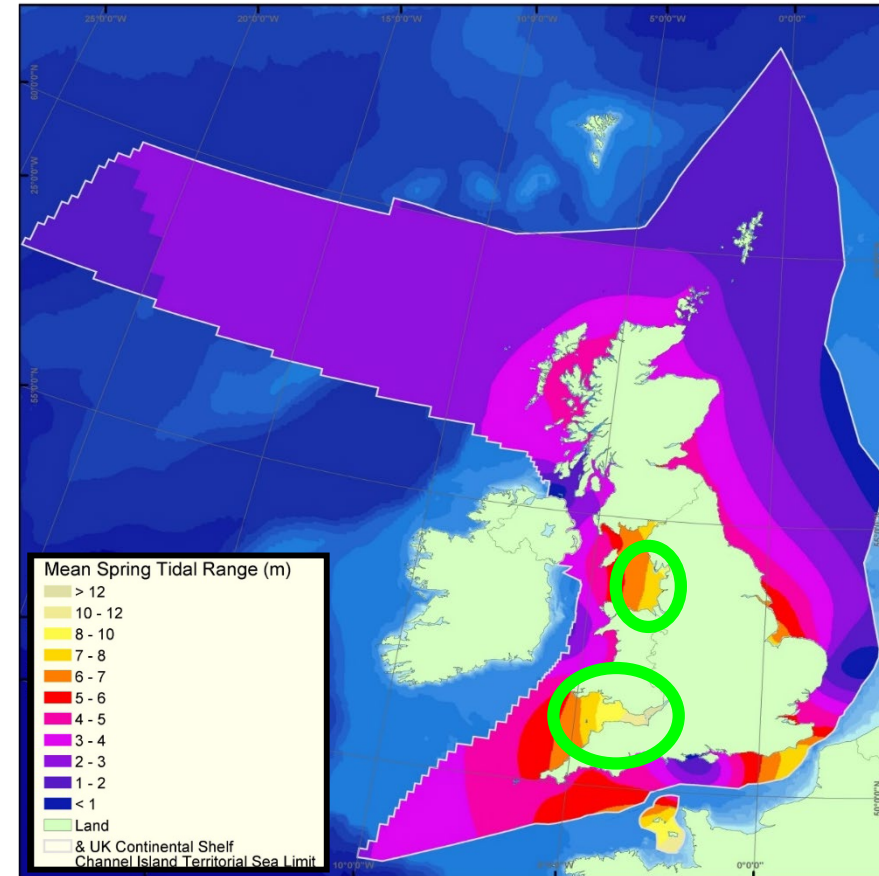
*Electric Power Research Institute (EPRI).*







Tidal Stream



Tidal Range

Source – DTI Atlas of Marine Renewable Energy Resources

Neill, S.P., Angeloudis, A., Robins, P.E., Walkington, I., Ward, S.L., Masters, I., Lewis, M.J., Piano, M., Avdis, A., Piggott, M.D. and Aggidis, G., 2018. Tidal range energy resource and optimization—Past perspectives and future challenges. *Renewable energy*, 127, pp.763-778.





1. Introduction
2. Resource
3. Past
4. Present
5. Next Steps
6. Conclusions



# Morecambe Bay Proposals To Date

Dukes Lancaster, Theatrical Play "Keeping the Lights On, Morecambe Bay Tidal Barrage" Advisor Prof George Aggidis **2018**

Morecambe Bay

Mo Kelly Barrage, North West Tidal Energy Alliance **2015**

Alan Torevell, Prof George Aggidis & NWBLT, NWE<sup>2</sup> Model **2014**

Nigel Catterson & Peter Roberts Gateway & VETT Technology **2010**

NWTEG Launch Prof George Aggidis founding Chairman **2008**

David Brockbank Martin Widden & Prof George Aggidis Blue Energy Tidal Fence **2004**

**2004** David Brockbank & Prof George Aggidis Bridge Across the Bay

**2004** David Brockbank, Prof Stephen Salter & Prof George Aggidis Theta Islands

**2002** John Handley, Westmorland Gazette Barrage

**1960s** Ernest Leeming Barrage

**1857** Lancaster to Grange over Sands Railway Bridge across Morecambe Bay

**1837** George Stephenson West Coast Railway over Morecambe Bay



Existing tidal references world wide include:

- **La Rance, France,** **1967**

  - Alstom Hydro
  - 5.4 m Dia. 24 Turbinesx10 MW
  - 240 MW total capacity
- **Kislaya Guba, Russia,** **1968**

  - 1 Turbine × 0.2 MW
  - 1 Turbine × 1.5 MW
  - 1.7 MW total capacity
- **Annapolis, Canada,** **1980**

  - Andritz VaTech Hydro
  - 7.6 m Dia. Straflo Turbine
  - 1 Turbine x 20 MW
  - 20 MW total capacity
- **Jiangxia, China,** **1980**

  - 1 Turbine × 500KW
  - 1 Turbine × 600KW
  - 3 Turbines × 700KW
  - 3,200 KW total capacity
- **Sihwa, South Korea,** **2011**

  - Andritz Hydro
  - 7.5 m Dia. 10 Turbines x 26 MW
  - 260 MW total capacity



*Sihwa, South Korea tidal power plant 2011*

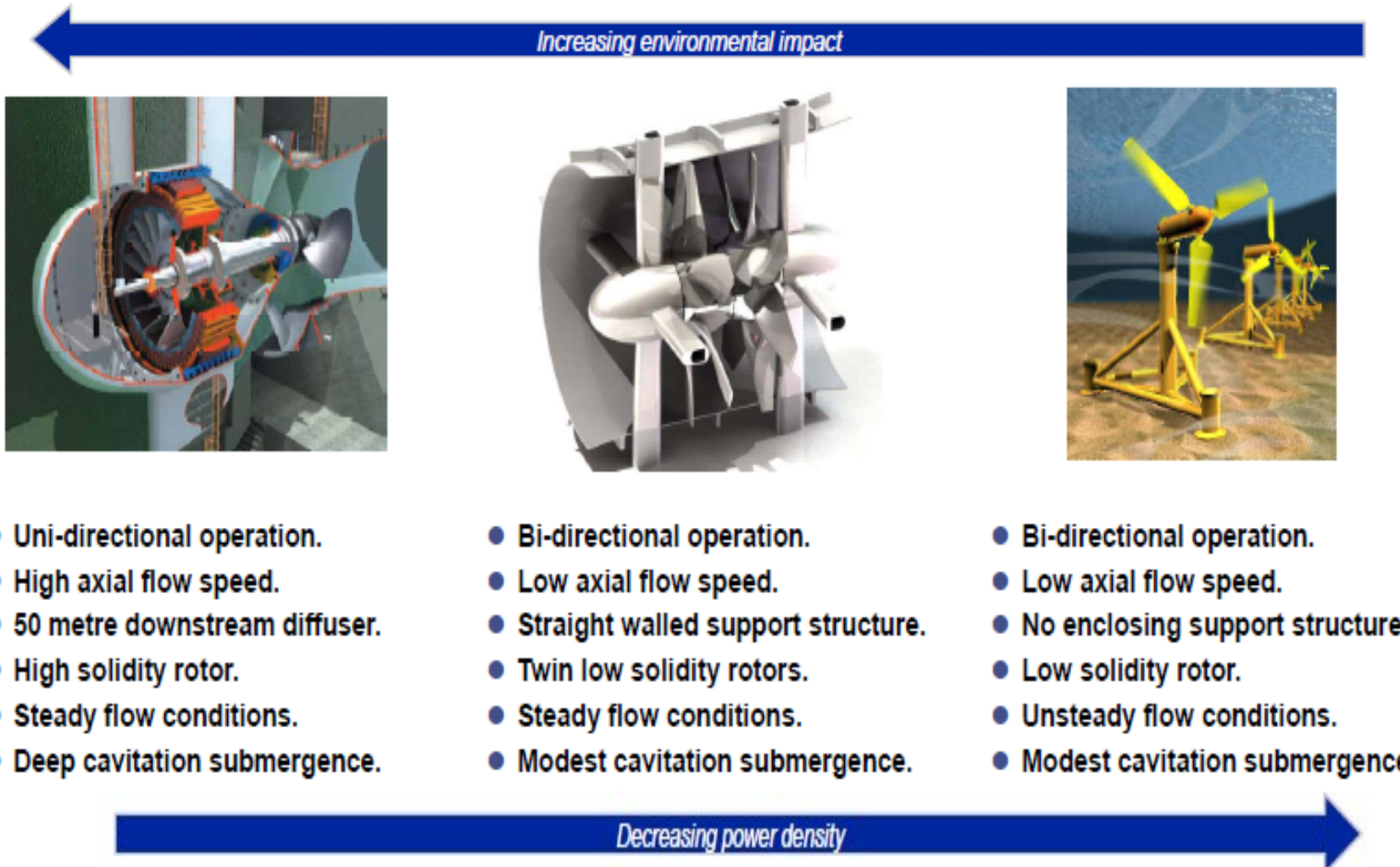
**Markus Schneeberger**  
**ANDRITZ Hydro &**  
**Prof George Aggidis**

1. Introduction
2. Resource
3. Past
4. Present
5. Next Steps
6. Conclusions



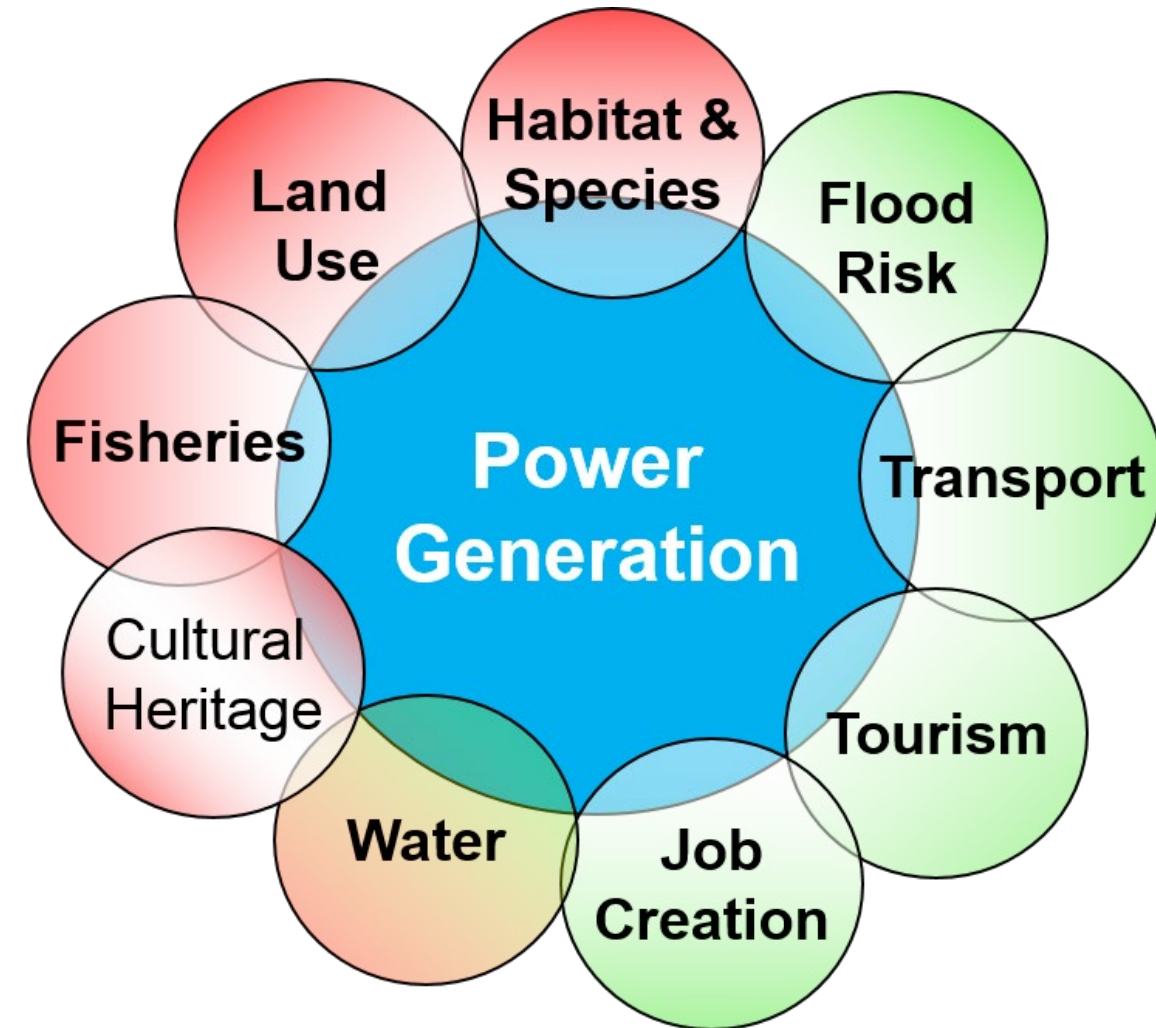
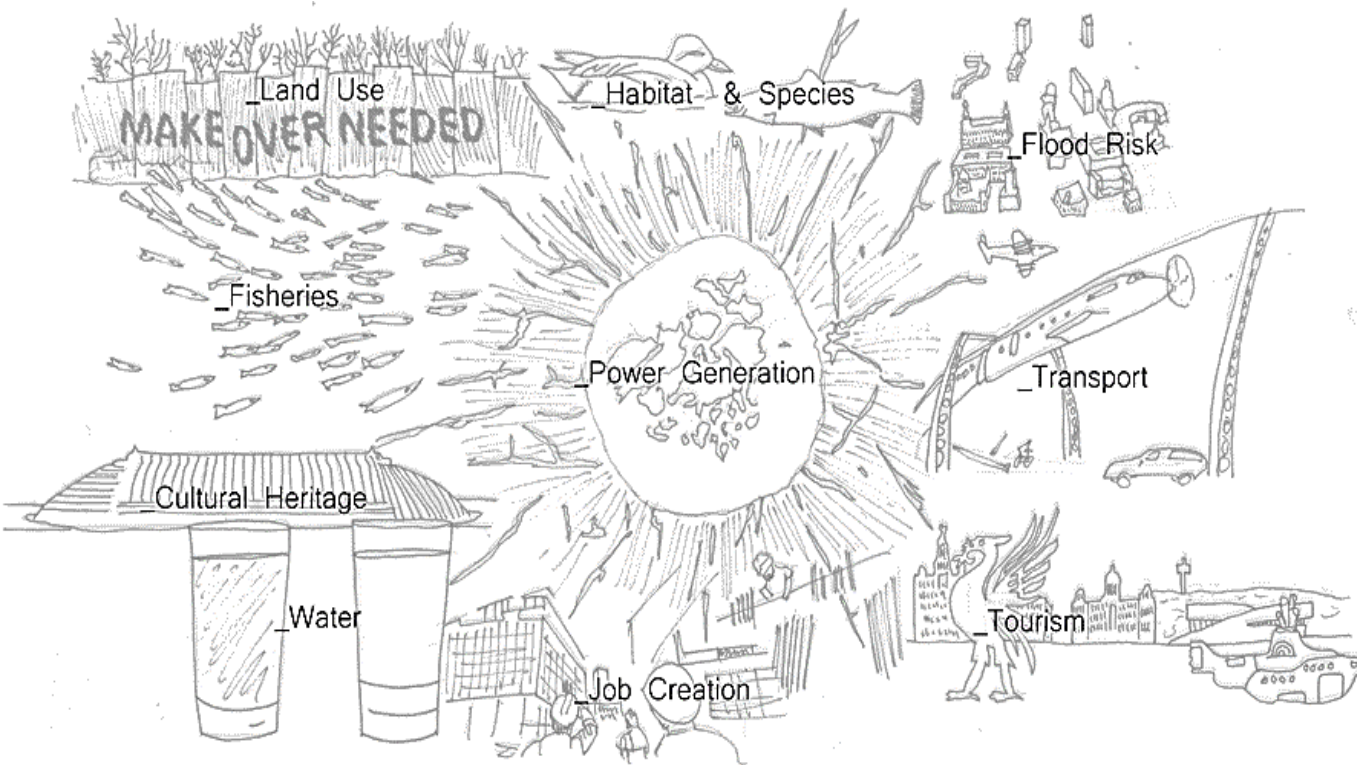


Both forms of energy (potential & kinetic) can be harvested by tidal energy technologies as renewable energy.



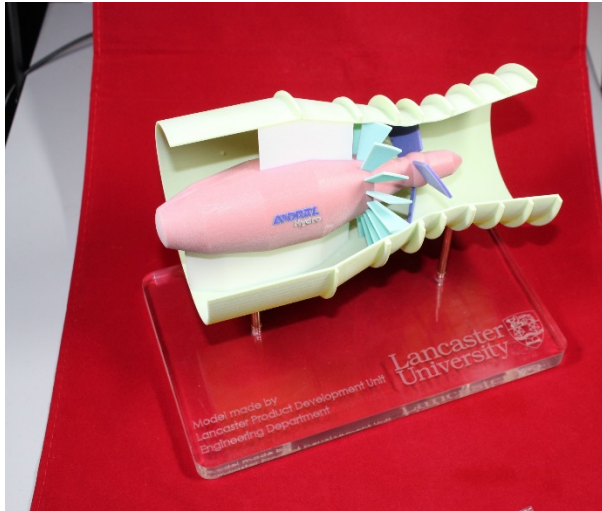
Waters, S. and Aggidis, G., 2016. Tidal range technologies and state of the art in review. *Renewable and Sustainable Energy Reviews*, 59, pp.514-529.

# Multi Functional Infrastructure & Power Generation

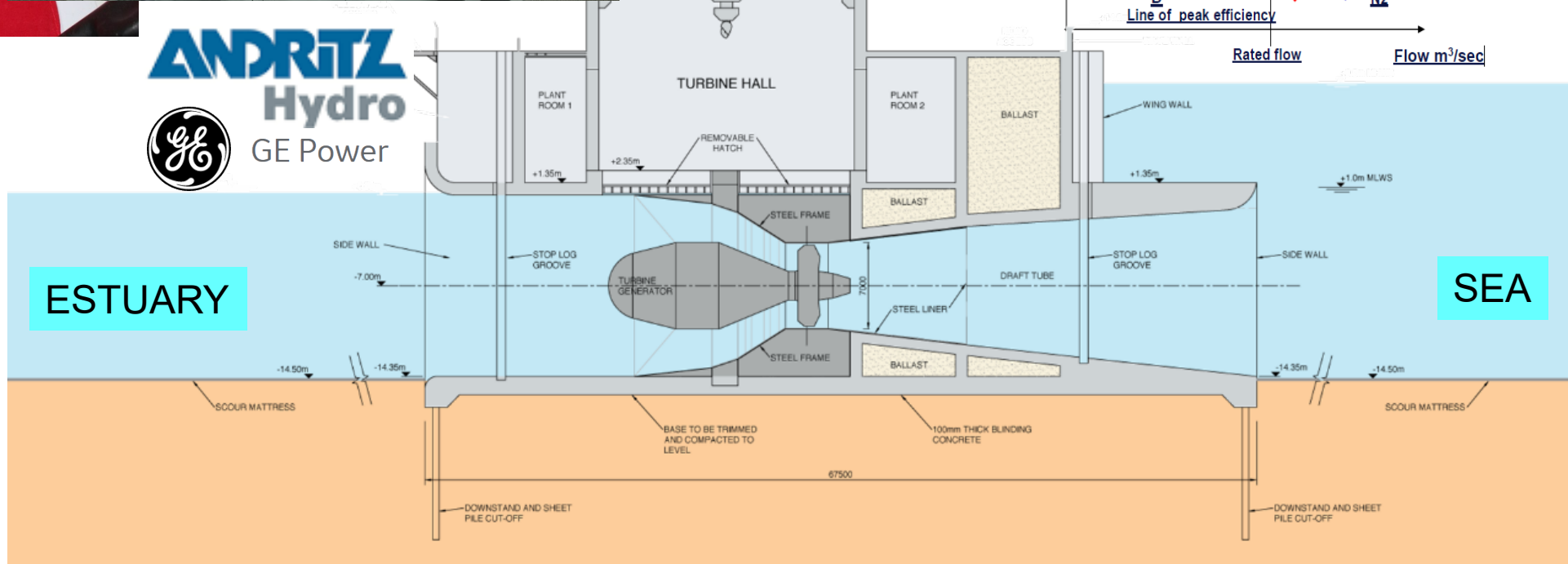
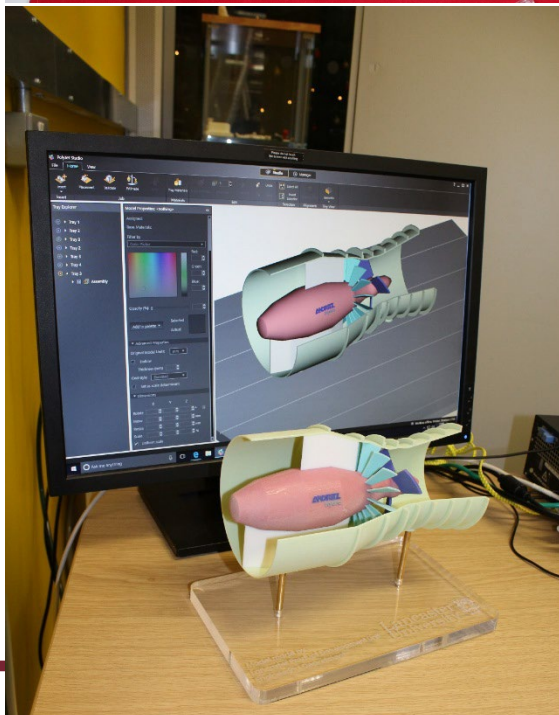
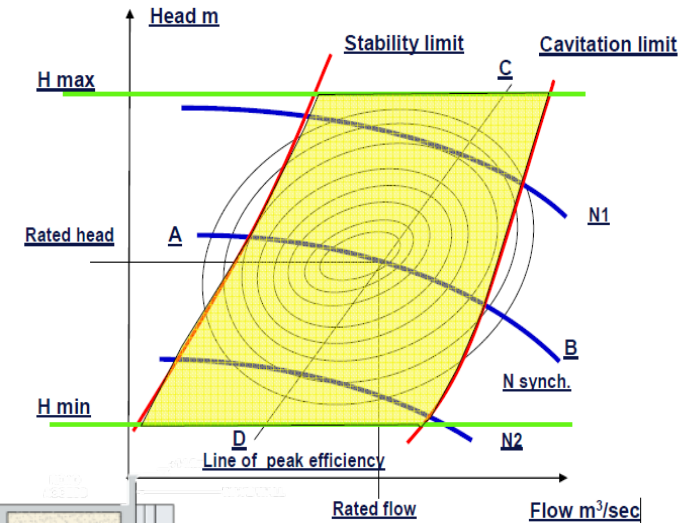


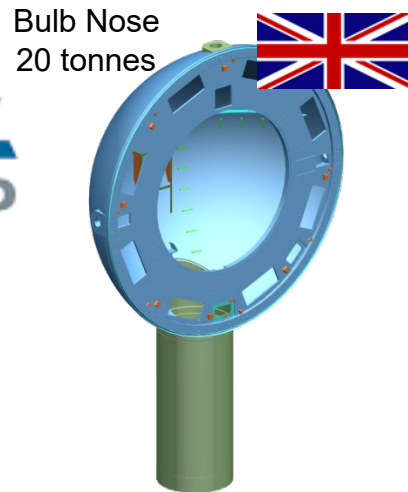
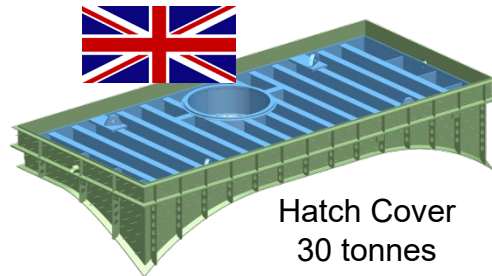


# Triple Regulation Turbine (2017)



Prof George Aggidis  
& Bernd Hindelang  
ANDRITZ Hydro

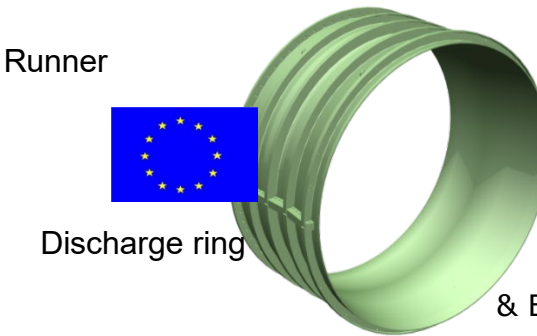
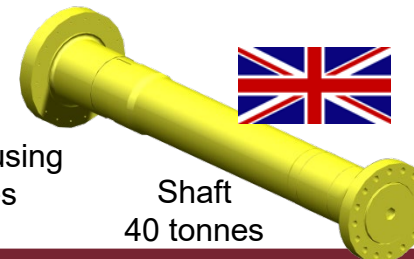
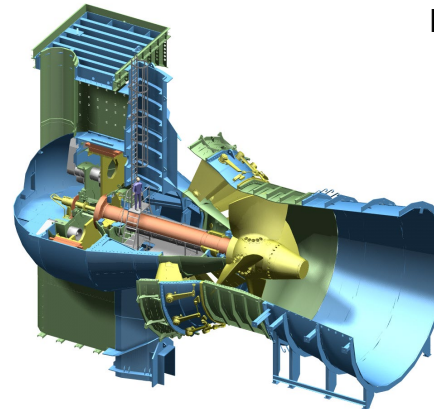
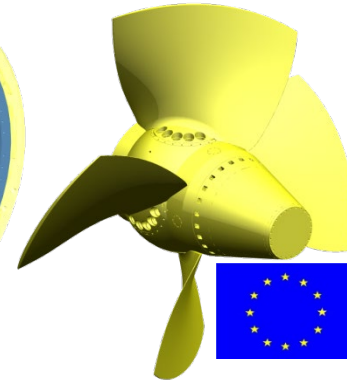
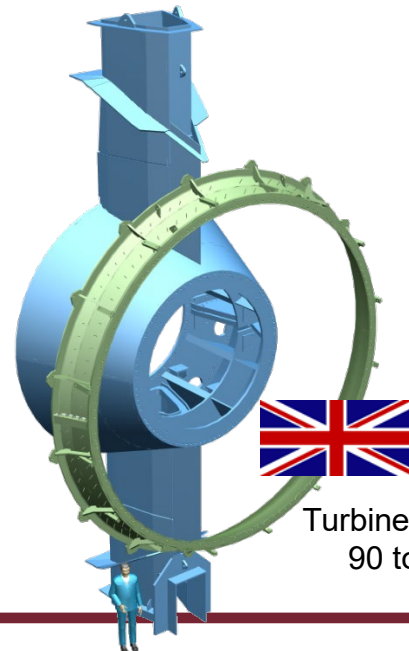
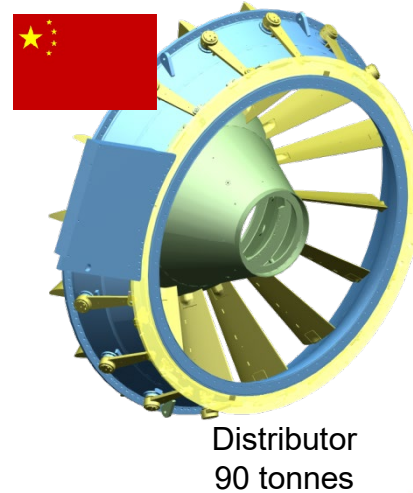
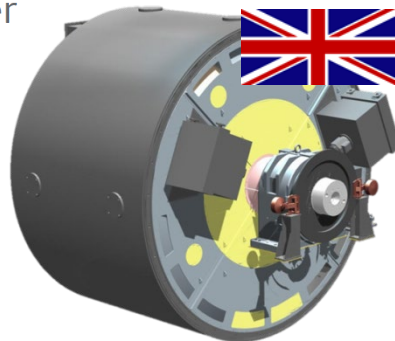




**ANDRITZ**  
Hydro



GE Power

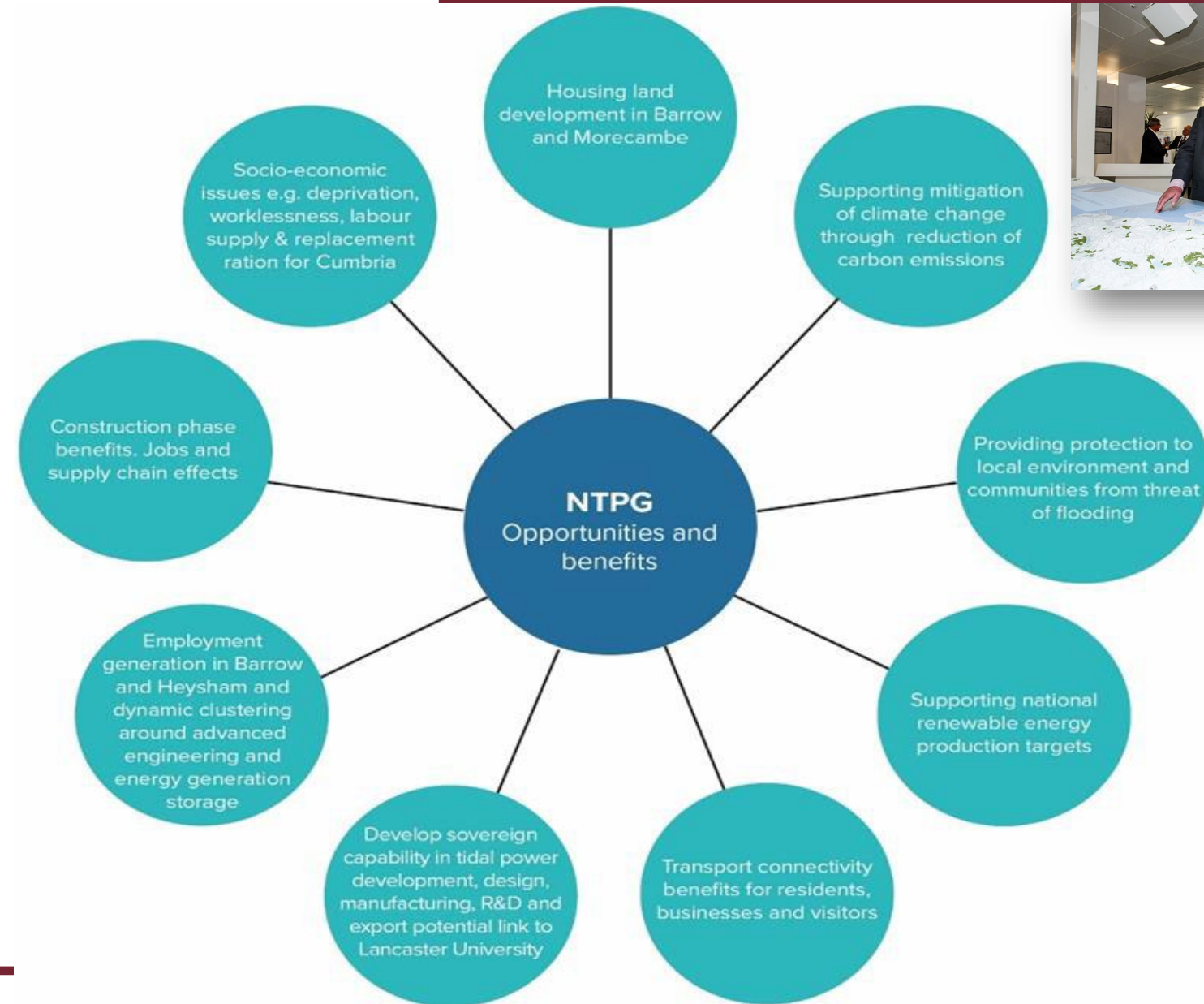


Prof George Aggidis  
& Bernd Hindelang, John Epps  
ANDRITZ Hydro

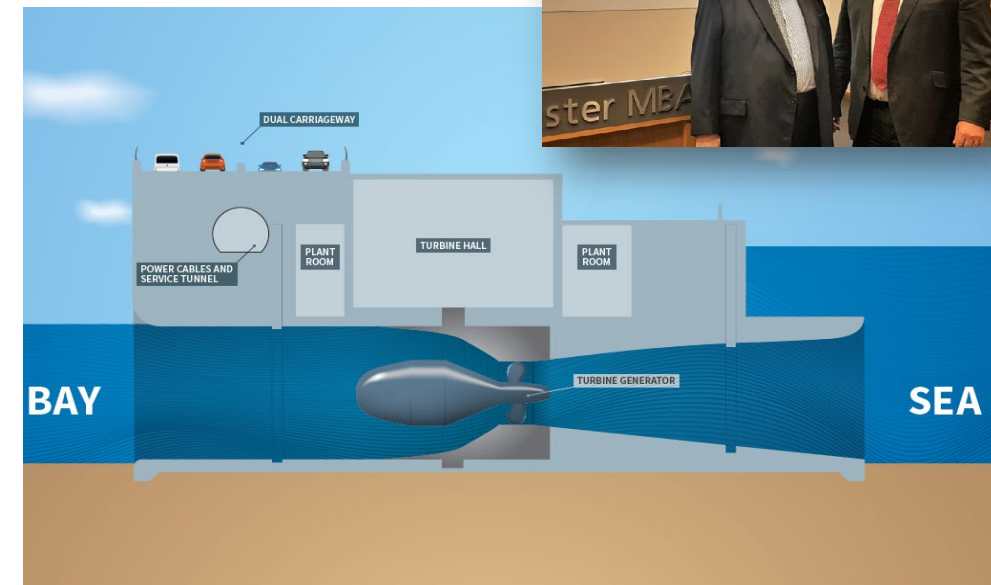
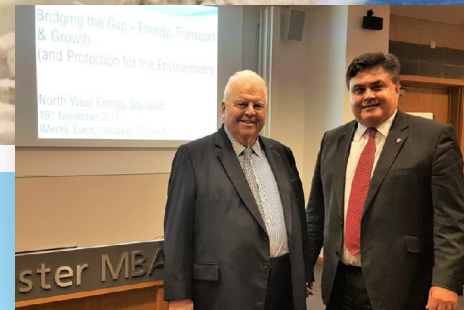


Bernd Hindelang  
ANDRITZ Hydro &  
Prof George Aggidis





Alan Torevell & Prof George Aggidis



- **PAST** - Historically and up to date:
  - All proposals for the various schemes proposed for Morecambe Bay **have not progressed**
  - **Despite greater power output forecasts** (due to mainly 0-D modelling) technological developments, multi functional infrastructure and strong transport links
  - Because they have **not been able to achieve appropriate financial targets for government** funding and the profit to cost ratio required to attract investors
- **FUTURE** - From now on and looking into the future:
  - We have to address the climate emergency
  - Including potential sea level rising  
(**IMechE Report "Rising Seas: the Engineering Challenge", 12 Nov 2019**)



1. Introduction
2. Resource
3. Past
4. Present
5. Next Steps
6. Conclusions

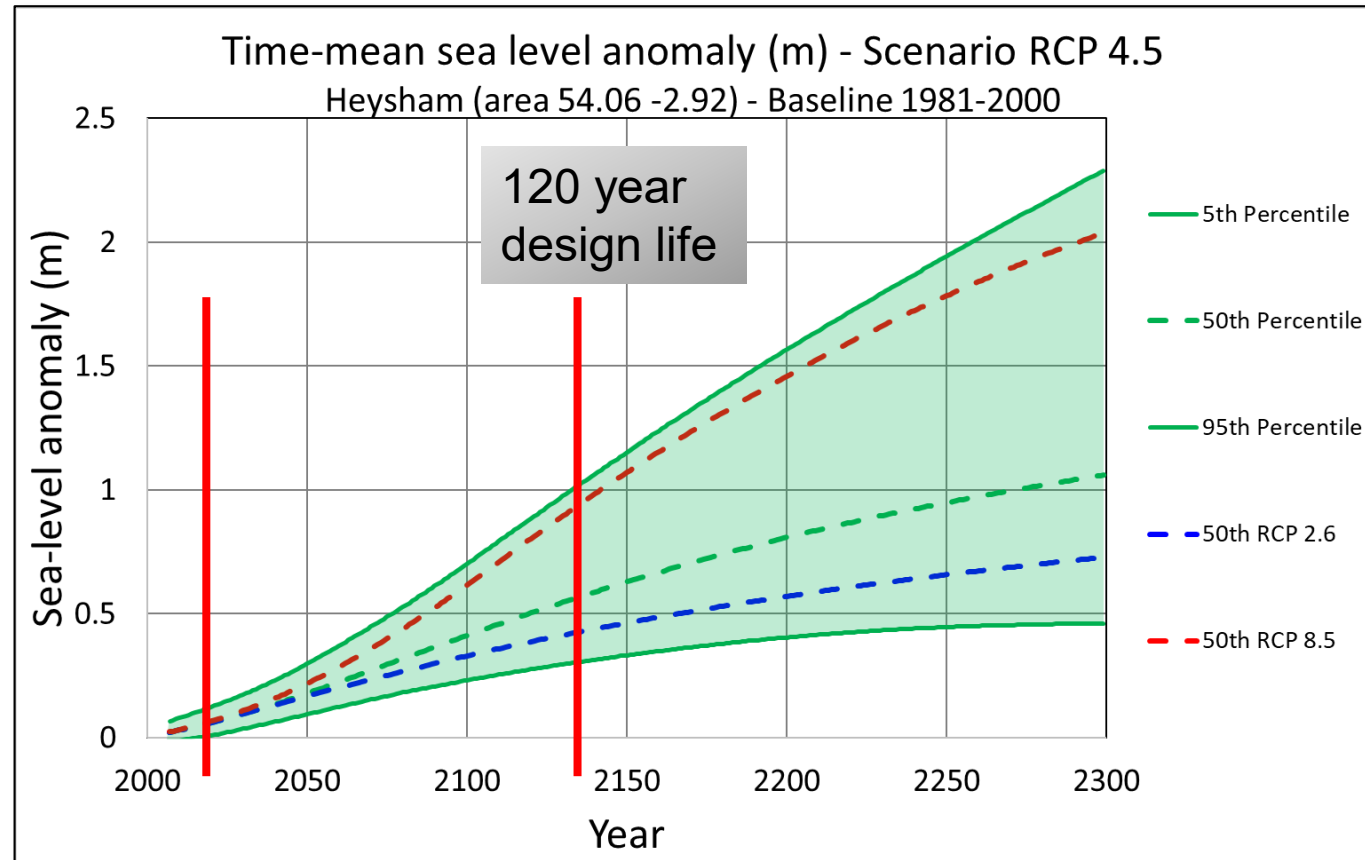
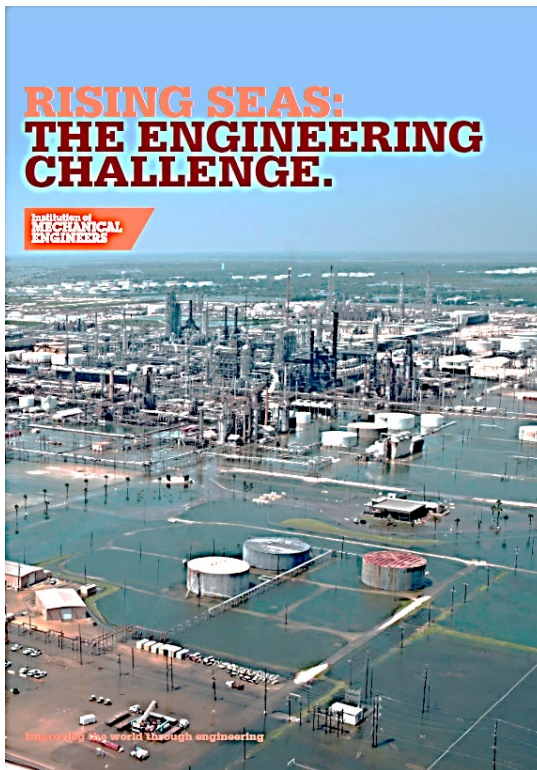


- The **UK government** have announced a climate emergency with targets to **decarbonise by 2050**.
- We need to reach "net zero" far **sooner than 2050** – we're already seeing the **catastrophic effects** of climate breakdown both across the globe and here in the UK.
- We have just a **short window of opportunity** left to **avoid irreversible damage**.
- We need to **live greener** and more **sustainable lives**.
- We need to **reduce UK dependence on imports** of dirty fuels like coal, oil and gas.
- The UK should be powered by a **home-grown renewables sector**, providing **jobs** and **clean energy** at **affordable prices** for homes, heating, transport and industry.



A **Representative Concentration Pathway** (RCP) is a greenhouse gas concentration (not emissions) trajectory adopted by the IPCC for its fifth Assessment Report (AR5) in 2014. Emissions in RCP 4.5 peak around 2040, then decline.

UK Open Government Licence for  
Public Sector Information v3.0 UKCP18



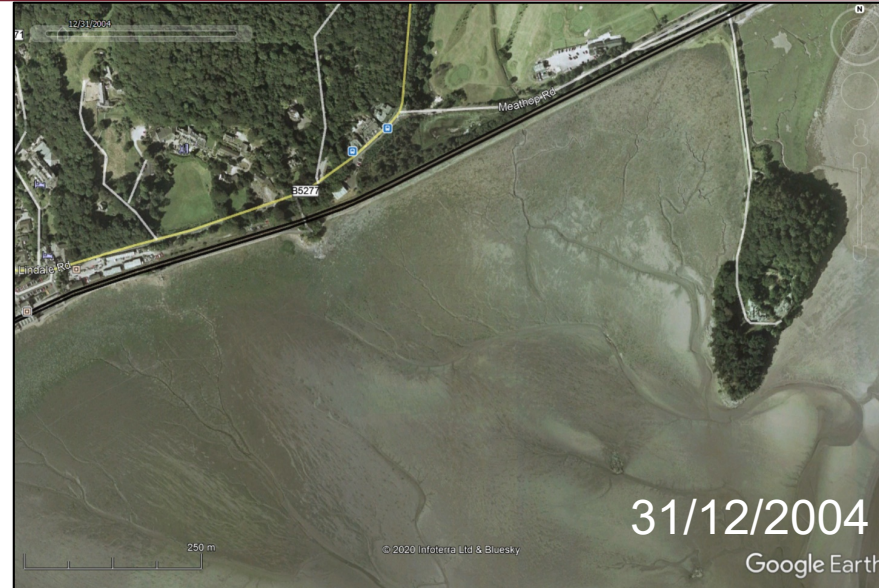
Projected sea-level rise for various IPCC RCP scenarios



# Barrage & Natural Changes

- With no Barrage and no intervention Nature will take it's course

- Is the Environment better protected with a Barrage?











The volume of floodwater combined with the restriction caused by the high tide, resulted in overtopping of the right bank of the River Kent in the area around Levens Hall and Levens Moss.



This vital conversation is now set across the backdrop of the **coronavirus pandemic**.

- Now more than ever we must **prioritise health and wellbeing** of everyone by investing in infrastructure which improves our quality of life.
- We must **put green jobs at the heart of the recovery**.
- We must **fix our broken economy** so it works for everyone and looks after our planet.
- We must **co-operate globally and act responsibly** - as per climate breakdown, the pandemic has disproportionately impacted the poorest and most vulnerable in society.
- As one of the richest countries in the world, **the UK has a duty to lead the way** to protect the health of both people and planet.

## Opportunities for tidal range projects beyond energy generation: Using Mersey barrage as a case study.



THE GREEN WHALE (2017)



Dr David Howard CEH  
& Prof George Aggidis

...This paper contributes in part to a fully holistic treatment of **tidal barrages**, recognising that apart from **energy generation**, other **environmental, societal and economic opportunities** arise and must be fully investigated for robust decision-making...

Petley, S., Starr, D., Parish, L., Underwood, Z. and Aggidis, G.A., 2019. Opportunities for tidal range projects beyond energy generation: Using Mersey barrage as a case study. *Frontiers of Architectural Research*, 8(4), pp.620-633.



# Dragon Energy Island

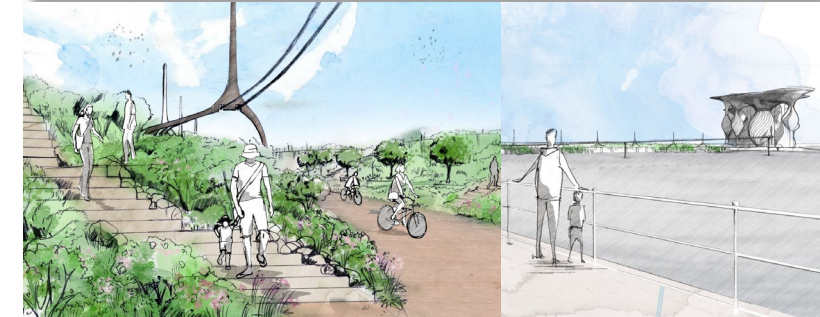
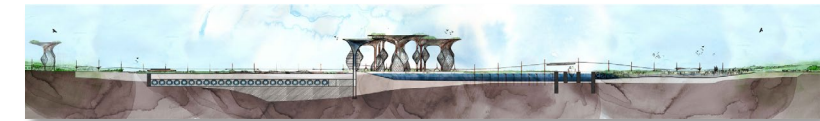
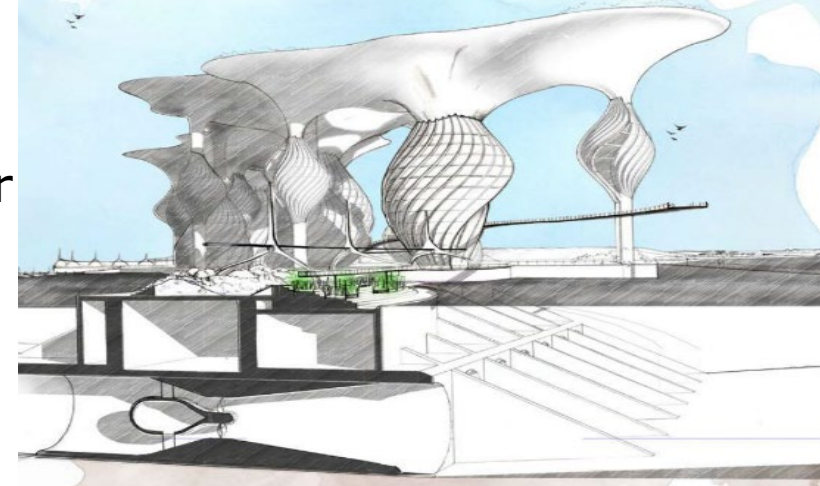
## Proposed by Swansea Bay City Region (2019)





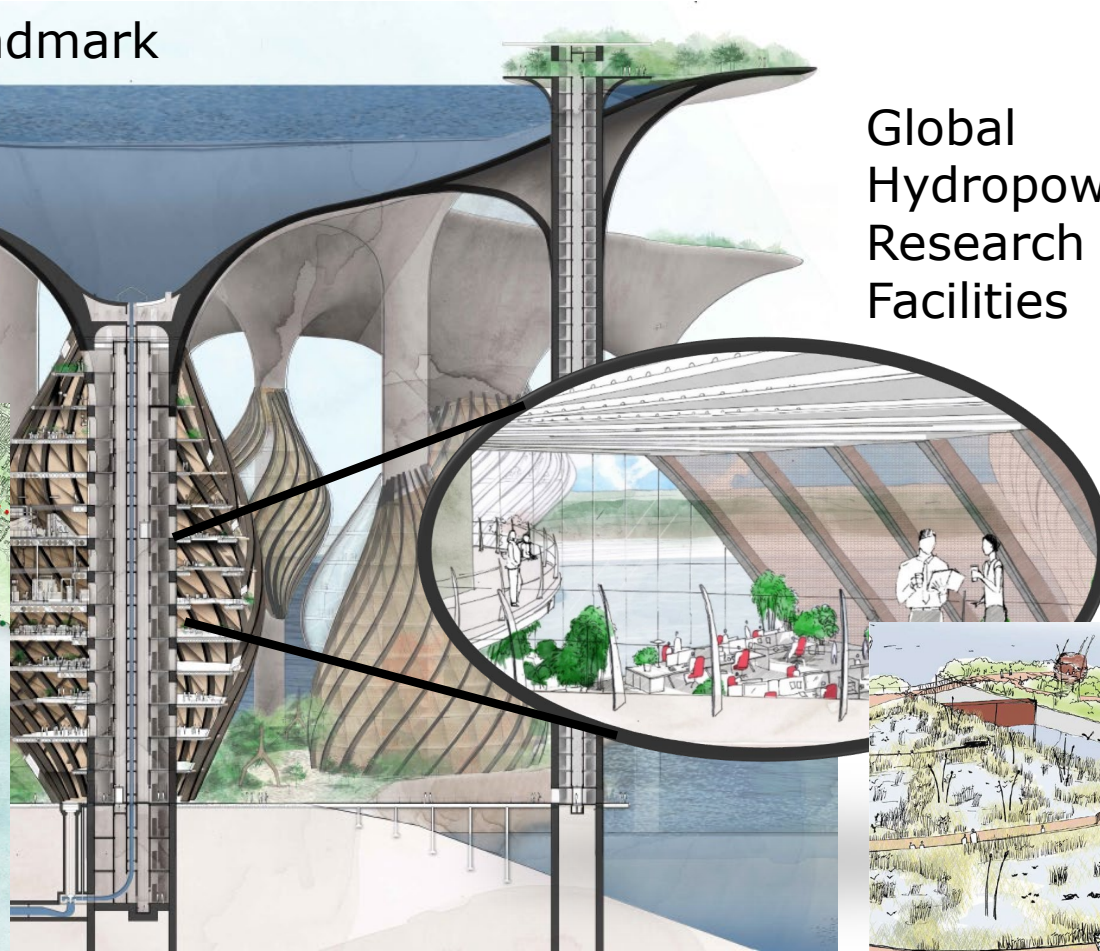
## International Landmark

## Global Hydropower Research Facilities



## Connecting Communities

## Integrating Wildlife



Petley, S., Starr, D., Parish, L., Underwood, Z. and Aggidis, G.A., 2019. Opportunities for tidal range projects beyond energy generation: Using Mersey barrage as a case study. *Frontiers of Architectural Research*, 8(4), pp.620-633.



- Hydropower
- Compressed Air
- Batteries
- Flywheel
- Hydrogen
- Gravitational Mass
- Etc.





- Lancaster University's work suggests:
  - Further research and modelling needed to optimise and balance the requirements of climate change, environment & energy generation, energy storage & grid supply against energy demand. In addition to triple regulation & modelling accuracy (0D, 2D & 3D).
  - More pumps are required to successfully maintain the environmental status sea level rise and mitigate serious flooding.
- Due to the proposed recommendation by the Benyon Report 2019 and its status as a Highly Protected Marine Area, Morecambe Bay is now an unlikely location in NW England for a power only project.
- We welcome this report which has helped further development of the holistic benefits of Morecambe Bay Tidal Barrage project.

- Establish links with the Lancaster University Eden North Project. A unique and ambitious project that seeks to reimagine the seaside resort for the twenty-first century. The project has far-reaching environmental, social and economic ambitions.



Professor Robert Barratt  
Eden North Project Chair of  
Education & Engagement





1. Introduction
2. Resource
3. Past
4. Present
5. Next Steps
6. Conclusions



- Global pandemic
- One global community
- Most vulnerable in our society affected
- Exposed the serious weaknesses of our current systems
- We need to rebuild a society
- Sustainable, green jobs
- An end to fuel poverty
- Safeguard our planet and the health of all

**Morecambe Bay Tidal Barrage is a vital step in getting us closer to a greener, safer, fairer future**

Tidal Energy (unlike wind & solar) does not suffer from intermittency and is unaffected by the weather being highly predictable for future generations generated both day and night and build for 120 years



## 1. Primary Focus

Health, Wellbeing, Green Jobs & Environment - Climate Emergency

- This is why we need to build a Morecambe Bay Tidal Barrage
- All UK estuaries will be seeing same pressures from **rising sea level**
- **Therefore a Barrage across the Bay is now essential**

## 2. Secondary Focus

Energy, Storage and Grid

JFK : “We choose to go to the moon.

We choose to go to the moon in this decade and do the other things, not because they are easy, but because they are hard, because that goal will serve to organize and measure the best of our energies and skills, because that challenge is one that we are willing to accept, one we are unwilling to postpone, and one which we intend to win.”

This speech would go on to become one of the most quoted and celebrated speeches of all time, and **JFK’s “Moonshot” would become synonymous with the idea of challenging the impossible.**

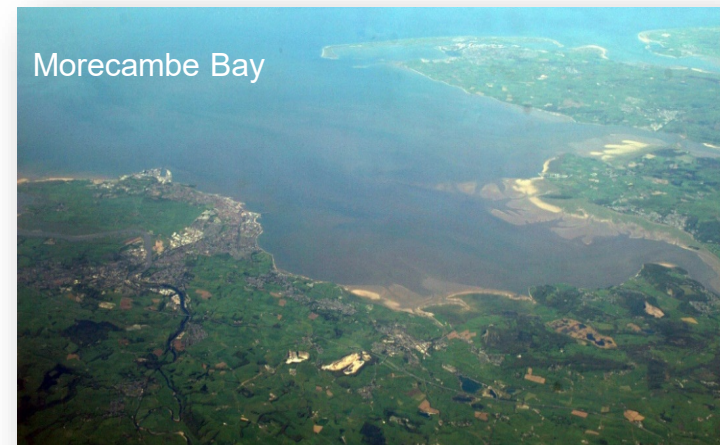


President John Fitzgerald Kennedy gave his now famous “Moonshot” speech at Rice University on 12 Sept 1962 in which he outlined his audacious plans to put a man on the moon.



HRH Prince William and Sir David Attenborough launch Earthshot Prize on 8 Oct 2020

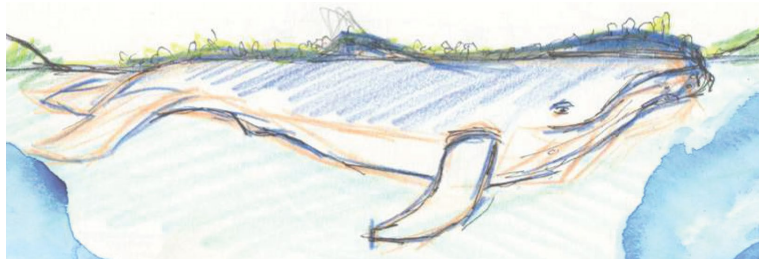
THE  
**EARTHSHOT**  
PRIZE



**Morecambe  
Bay Shot ?**



# Thank you - Questions?



## Professor George Aggidis

FIMechE, FIMarEST, FEI, FIET

[g.aggidis@lancaster.ac.uk](mailto:g.aggidis@lancaster.ac.uk)

# THANK YOU

Thank you for your attention. We hope you enjoyed this event which was facilitated by Emma Pateman, Fiona Wong, Dr. Georgina Harris, Dr. David Ball, Simon Cathery and Murat Islam on behalf of the Institution of Mechanical Engineers Power Industries Division North West Centre and Greater Manchester Area committees.

## Upcoming events:

- <https://www.imeche.org/events>
- <https://nearyou.imeche.org/near-you/UK/North-Western>

## Connect with us:

- <https://www.linkedin.com/in/IMechE-North-Western>

[www.imeche.org](https://www.imeche.org)

Institution of  
**MECHANICAL  
ENGINEERS**

- ✓ [become a member](#) of the Institution of Mechanical Engineers
- ✓ learn more about how to become [professionally registered](#)
- ✓ present your work and get feedback from a select audience
- ✓ participate in STEM activities
- ✓ network with students, apprentices, engineers and managers
- ✓ [promote](#) your business or organisation
- ✓ enhance your professional standing
- ✓ showcase your commitment to [continuing professional development](#)
- ✓ contribute to the [development](#) of our engineering community
- ✓ be featured in our newsletters and social media channels

**Improving the world through engineering**