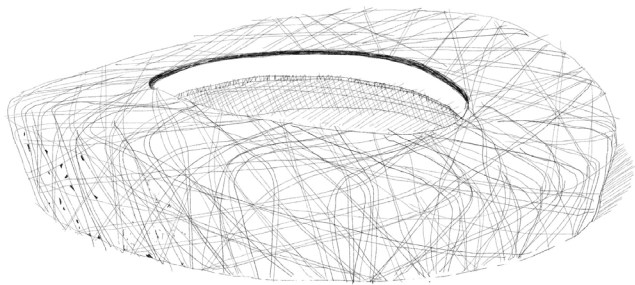
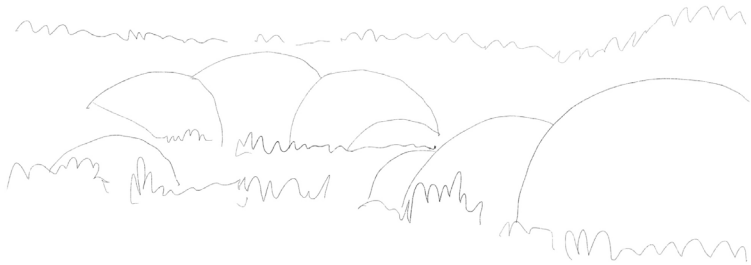


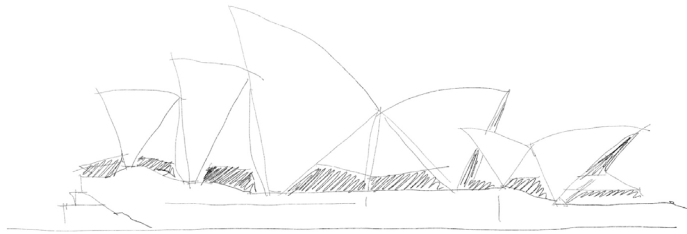
Beijing National Stadium, Beijing, China
Jacques Herzog and Pierre de Meuron



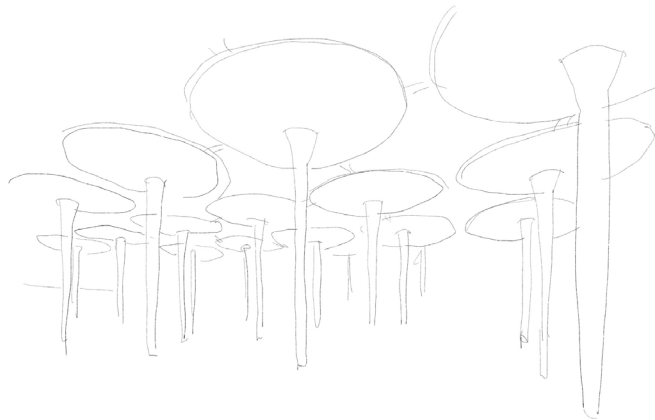
Eden Project, Cornwall, UK
Grimshaw Architects



Sydney Opera House, Sydney, Australia
Jørn Oberg Utzon



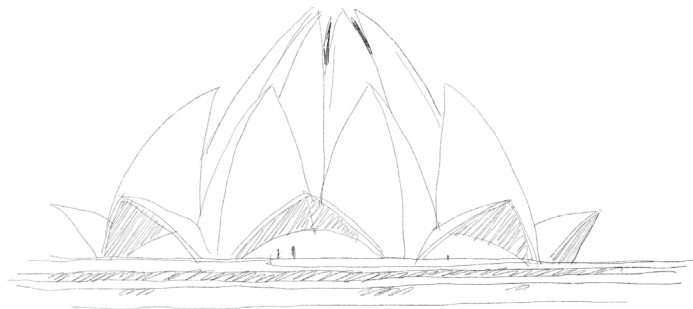
Johnson Wax Headquarters, Racine, USA
Frank Lloyd Wright



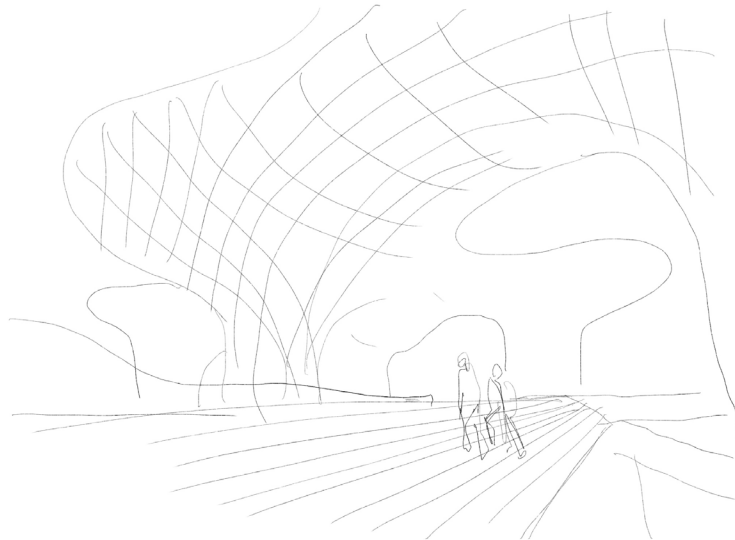
Gare do Oriente, Lisbon, Portugal
Santiago Calatrava



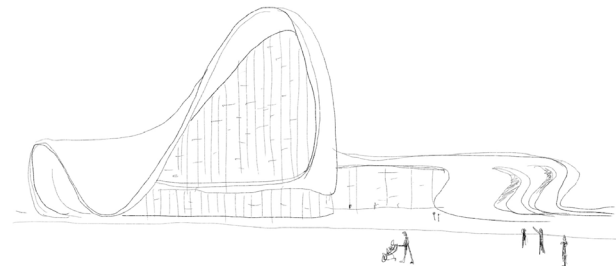
Lotus Temple, New Delhi, India
Fariborz Sahba

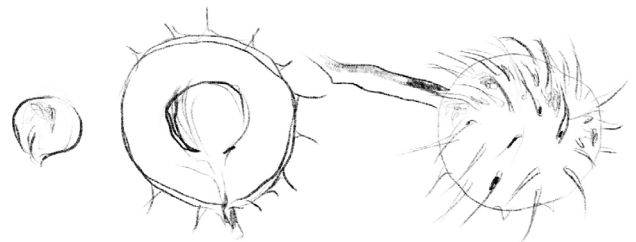


Metropol Parasol, Seville, Spain
Jürgen Mayer



Heydar Aliyev Center, Baku, Azerbaijan
Zaha Hadid





(re) imagine, add human scale
e.g. scale, (de)composition, proportions,
hierarchy, rhythm

Explore



Present

Tell a story
e.g. take pictures from different perspectives), create a narrative, present your concept/design



Draw to analyse
e.g. location, shape, structure,
material, properties, features

Analyse



Discover

Look around and observe nature
Identify different elements
e.g. leaves, branches, trees

BioArchitecture

inspired by nature

Bio Architecture: is a blending of art/architecture and biomimetics/ bioinspiration, and incorporates a bioinspired design from the outset in all parts of the work at all scales.

Biomimetics | Biomimicry: refers to the technical translation and realization of functional strategies used by biological organisms or systems in Nature (Denise deLuca, 2021). A field that is highly interdisciplinary, involving the understanding of biological functions, structures and principles of various objects found in nature by scientists (Ripley & Bhushan, 2016).

Biomimicry: Innovation Inspired by Nature (Janine Benyus, 1997)