



European Union
European Regional
Development Fund

**NORTHERN
POWERHOUSE**

Greater Manchester | Greater Intelligence | Greater Business

AI Foundry

Showcase

12th October 2021
10:00am - 1:00pm

gmaifoundry.ac.uk



University of
Salford
MANCHESTER





“In Greater Manchester it is our ambition to be recognised as a world-leading digital city region. The launch of the Greater Manchester AI Foundry is a significant step towards these ambitions, helping our city-region’s start-ups and SMEs advance their businesses at a time when they need it most.”


- Andy Burnham, Mayor of Greater Manchester

gmaifoundry.ac.uk

gmaifoundry@mmu.ac.uk

🐦 @GMAIFoundry

📌 Greater Manchester AI Foundry



Scan here to explore the **Greater Manchester AI Foundry** programme, meet the team and explore our **universities' AI specialisms!**



gmaifoundry.ac.uk

gmaifoundry@mmu.ac.uk

 @GMAIFoundry

 Greater Manchester AI Foundry

The Speakers



Professor Rob Aspin, Professor of Extended Reality, Manchester Metropolitan University

Professor Rob Aspin is Chair of Extended Reality and Deputy Head of Department (Computing and Mathematics) at Manchester Metropolitan University.

His research is grounded in the domains of virtual and augmented reality with a particular interest in data visualisation and medical imaging. His work seeks to enable intuitive comprehension and exploration of complex high volume, and velocity, dynamic data sets through immersive, interactive 3D visualisation. Given the data centric nature of this work there is a significant cross over with AI/data science for data modelling and simulation, and cyber security which offers rich time critical data sets. Co-founder of both the Greater Manchester AI and Cyber Foundry, his activity is centered around the development of strategic partnerships across the region. He also leads the, DfE funded, InDigital Skills Bootcamps delivered by a wider national consortium formed of Institute of Coding (IoC) partners.



Tallat Azad, CEO, TradelectricAI

Tallat M Azad BEng, CEng, FIMechE is a qualified Chartered Engineer, a Green Energy entrepreneur and a Fellow of the IMechE. He has been in the power generation sector for over 28 years with a career in R&D, sales and production of turbomachinery for GEC, ABB and Alstom.

In addition to his current roles, as the CEO of Storelectric Ltd and TradelectricAI Ltd, he has Board directorships on several companies and recently completed a funding round of £1m for a company now valued at over £17m. He has appeared on CNBC and presented at conferences worldwide about power generation and energy storage.

Tallat M Azad participated in the Greater Manchester AI Foundry programme with Manchester Metropolitan University.



Steven Bookbinder, CEO, Viscgo

Joining the Greater Manchester AI Foundry programme with the University of Lancaster, Steven Bookbinder has over 20 years' experience innovating, designing and managing product development specialising in medical and health devices.

Steven's experience and expertise ensures that Viscgo's products meet the highest standards of quality, reliability, accuracy and value for money.



Dr Sean Brophy, Project Manager, Manchester Metropolitan University

Dr Sean Brophy is the Project Manager of the Greater Manchester AI Foundry. He is also an lecturer and researcher at Manchester Metropolitan University Business School, having previously spent a decade at the Wharton School (University of Pennsylvania) developing programmes for leading organisations like Google, Twitter, KPMG, the World Economic Forum, the Municipal Government of Shanghai, and the Crown Prince Court of Abu Dhabi. He is an elected Fellow of the Royal Geographic Society and a Fellow of the Royal Society of Arts.



Andy Burnham, Mayor of Greater Manchester

Andy Burnham was elected Mayor of Greater Manchester in May 2017, and was re-elected for a second term in May 2021.

Prior to being Mayor, Andy was MP for Leigh from 2001. In Government, Andy has held Ministerial positions at the Home Office, Department of Health and the Treasury. In 2008 he became Secretary of State for Culture, Media and Sport, before returning to Health as Secretary of State in 2009.

In opposition, Andy has served as Shadow Education Secretary, Shadow Health Secretary and Shadow Home Secretary.

Andy lives in Leigh, Greater Manchester, with his wife and three children. He is a keen supporter of Everton FC.



The Rt Hon. the Lord Mandelson

Lord Mandelson is the former European Trade Commissioner and British First Secretary of State. Prior to this, he was Minister without Portfolio, Secretary of State for Trade and Industry, Northern Ireland Secretary and Secretary of State for Business, Innovation and Skills in the British Government.

He is Chairman of Global Counsel, a consultancy and advisory business he co-founded in 2010, as well as Senior Adviser to Lazard and President of the Great Britain China Centre. In 2016 he became the Chairman of the Design Museum and was installed as Chancellor of Manchester Metropolitan University.



Professor Andy Miah, Chair of Science Communication and Future Media, University of Salford

Professor Andy Miah's research focuses on the promise and peril of new technologies and his career has spanned the areas of science, technology, art, media, and culture. As a passionate communicator, he believes that we need to unravel the future by examining the ethics and morality of our options.

His interest in technology is born out of a desire to understand what happens to humanity in a world where digital and biotechnological innovations rapidly transform how we live. Author of 10 books and over 150 academic articles, he is also a frequent media commentator and has written for the Washington Post, Vogue, BBC, Wired, and many other outlets.





Keith Miller, Academic Director and Principal Investigator, Manchester Metropolitan University

Keith Miller is Head of Strategic Partnerships in the Department of Computing and Mathematics, Manchester Metropolitan University.

He is also Academic Director of both the Greater Manchester Cyber Foundry and the Greater Manchester AI Foundry ERDF projects, each involving approximately £6M of investment in SME innovation through the application of AI and cyber security research.

Keith is co-chair of the Greater Manchester Cyber Advisory Group, is a member of the Greater Manchester Digital Steering Board and was, until last year, Vice Chair of the UK's Council of Professors and Heads of Computing.



Dr Edward O. Pyzer-Knapp, Research's Global Lead, IBM

Dr Edward O. Pyzer-Knapp is IBM Research's Global Lead for AI Enriched Modelling and Simulation, with a particular focus on the development and exploitation of these techniques for accelerated materials discovery.

He has an cross-disciplinary research interest spanning IBM's three pillars of bits (classical computing), neurons (AI) and qubits (quantum computing).



Mandy Parkinson, Co-investigator, Greater Manchester AI Foundry

Mandy Parkinson is Head of Business and Public Engagement at Manchester Metropolitan University, HEA Fellow and Doctorial Researcher. Mandy joined Manchester Metropolitan Business School in 2016.

Mandy is Programme Director and either Principle Investigator (PI) or Co-Investigator across a series of SME programmes to support leadership, innovation, business growth and entrepreneurship.

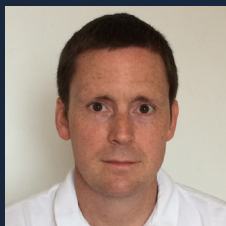




Professor Malcolm Press, Vice-Chancellor of Manchester Metropolitan University

Professor Malcolm Press is Vice-Chancellor of Manchester Metropolitan University, having worked previously at the Universities of Birmingham, Sheffield, and Manchester. Malcolm is a trustee of WWF-UK, UCAS, the British Council, and a Board member of the Institute for Apprenticeships & Technical Education.

Malcolm is an ecologist and has previously served as president of the British Ecological Society, a trustee of the Royal Botanic Gardens Kew, a council member of the National Trust, a council member of the Society of Biology, and as a Deputy Chair for a Research Excellence Framework panel.



Professor Magnus Rattray, Professor of Computational and Systems Biology The University of Manchester

Magnus Rattray is Director of the Institute for Data Science and Artificial Intelligence at the University of Manchester where he is Professor of Computational and Systems Biology.

He is the University of Manchester Lead for the Alan Turing Institute, the national institute for Data Science and Artificial Intelligence. He is a Fellow of the European Laboratory of Learning and Intelligent Systems (ELLIS) associated with the ELLIS Health Programme and his research is funded by the Wellcome Trust, UKRI and CRUK. He also works as a data science consultant with biotech and biomedical industry partners including Unilever and AstraZeneca.





Professor Allan Rennie, Professor of Manufacturing Engineering, Lancaster University

Allan Rennie is a Professor in Manufacturing Engineering and the academic lead for Lancaster University on the Greater Manchester AI Foundry project, bringing with him particular interests relating to design, engineering and manufacturing.

His research interests are broad within these disciplines, but with a particular bias towards additive manufacturing (or 3D Printing). Additive manufacturing is a technology he has been involved with since 1995 when he helped establish one of the first commercial service providers in the UK. At this time additive manufacturing was primarily used in new product development for prototyping purposes.



Liz Scott, Client Engagement Director, Tech Nation

Driving customer growth, Liz Scott provides meaningful support to the national network of digital tech entrepreneurs throughout the UK, and works closely with Tech Nation's partners.

Tech Nation's purpose is to make the UK the best place in the world to grow a digital tech business. Their absolute passion is making sure that scaleup leadership teams all over the UK can access the support and resources they need to fuel their growth.





Phil Swan, Director for Digital, Greater Manchester Combined Authority (GMCA)

Phil Swan leads the digital portfolio at Greater Manchester Combined Authority and is responsible for leading the next chapter in Greater Manchester's ambition to be recognised as a world-leading digital city region, with an ongoing commitment to taking an open, innovative and connective approach and 'doing digital differently'.

Other responsibilities include: digital city-region growth, digital skills and inclusion and infrastructure, ICT for the GMCA, positioning Greater Manchester as recognised centre for cyber and digital ethics, trust and security through resilience and economic growth

Phil's career includes ICT strategy and implementation work for Accenture, an MBA from Cambridge University, founding and exiting an SME, and leading the Tameside Council based public sector innovation partnership "iNetwork" over several years.



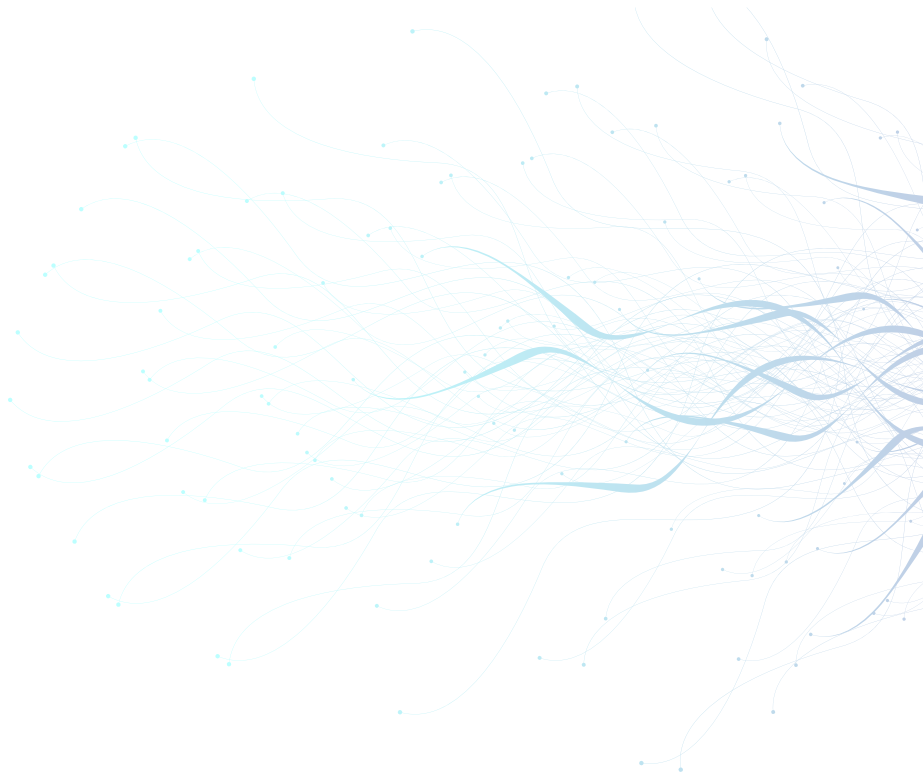
Professor Sunil Vadera, Lead Investigator, University of Salford

Sunil Vadera leads University of Salford's contribution to the Greater Manchester AI Foundry. His research is driven by the desire to close the gap between theory and practice in AI, something he has been doing for over three decades.

Examples of his work include: developing new models for real-time sensor validation of gas turbines in collaboration with the Mexican Instituto de Electricas; data mining of near miss explosions data for the Health and Safety Executive and analysis of SMART meters' data for an energy company that aimed to gain insight into consumer behaviour. His main line of research in recent years has been in the field of cost-sensitive learning, and in deep learning, where he is studying methods for reducing the size of the deep neural networks.



Notes

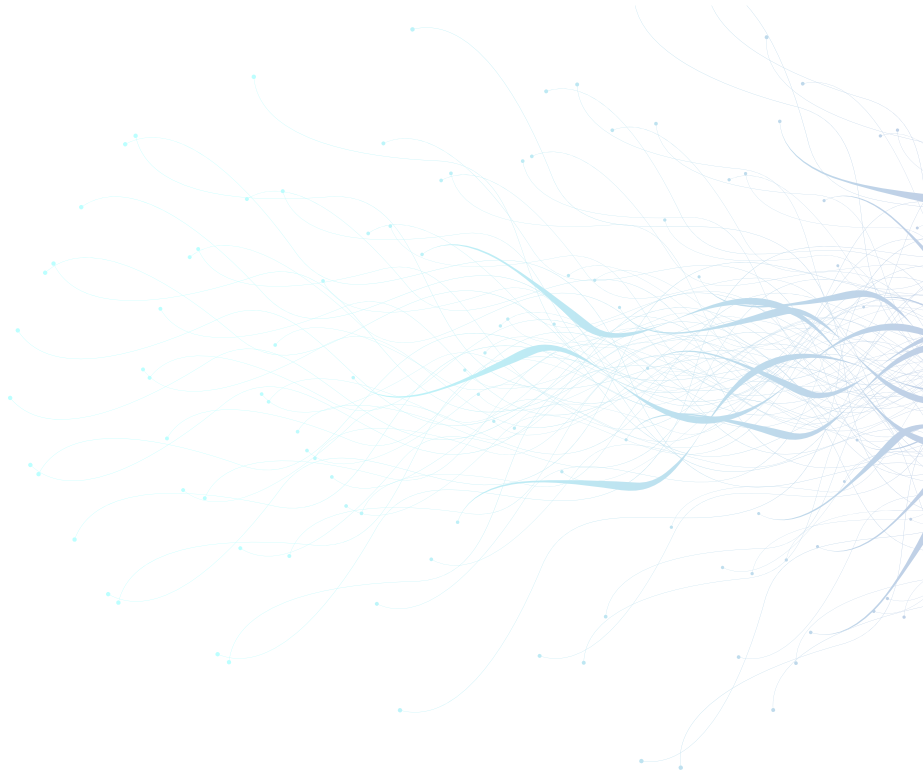


gmaifoundry.ac.uk





European Union
European Regional
Development Fund



gmaifoundry.ac.uk

