



Current Data Parameters
NAME 2023-02-09-SB137 (Full Data)
EXPNO 4
PROCNO 1

F2 - Acquisition Parameters

Date_ 20230210
Time 1.40 h
INSTRUM AVII400NB
PROBHD Z108618_0022 (F
PULPROG hsqcedetgpgpgs.3
TD 2048
SOLVENT CDC13
NS 4
DS 16
SWH 4801.537 Hz
FIDRES 4.689001 Hz
AQ 0.2132651 sec
RG 61.79
DW 104.133 usec
DE 13.47 usec
TE 297.9 K
CNST2 145.0000000
D0 0.00000300 sec
D1 1.00000000 sec
D2 0.00344828 sec
D4 0.00172414 sec
D11 0.03000000 sec
D16 0.00020000 sec
IN0 0.00002840 sec
TDav 1

ZGPGTNS

SFO1 400.1322407 MHz
NUC1 1H
P1 13.20 usec
P2 26.40 usec
PLW1 20.00000000 W
SFO2 100.6208180 MHz
NUC2 13C
CPDPRG2 bi_p5m4sp_4sp.2
P3 9.35 usec
P14 500.00 usec
P31 2119.00 usec
P63 1500.00 usec
PLW0 0 W
PLW2 75.00000000 W
PLW12 1.02450001 W
SPNAM[3] Crp60,0.5,20.1
SPOAL3 0.500
SPOFFS3 0 Hz
SPW3 10.01799965 W
SPNAM[14] bilev_1.wv
SPOAL14 0.500
SPOFFS14 0 Hz
SPW14 2.13714790 W
SPNAM[18] Crp60_xfilt.2
SPOAL18 0.500
SPOFFS18 0 Hz
SPW18 1.92990005 W
SPNAM[31] bilev_2.wv
SPOAL31 0.500
SPOFFS31 0 Hz
SPW31 1.06857395 W
GPNAM[1] SMSQ10.100
GPZ1 80.00 %
GPNAM[2] SMSQ10.100
GPZ2 20.12 %
P16 1000.00 usec

F1 - Acquisition parameters

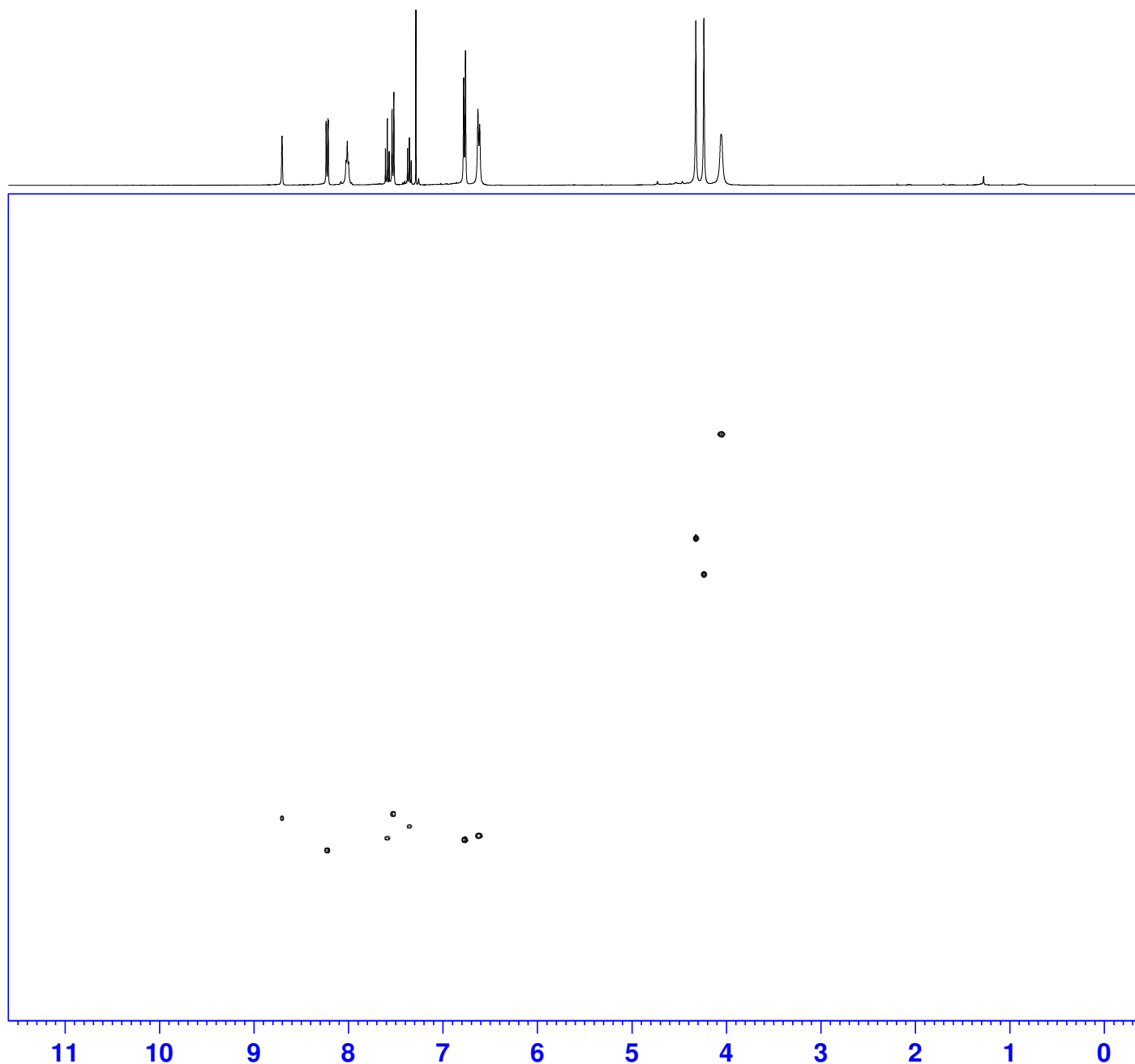
TD 256
SFO1 100.6208 MHz
FIDRES 137.544022 Hz
SW 174.970 ppm
FnMODE Echo-Antiecho

F2 - Processing parameters

SI 1024
SF 400.1300000 MHz
WDW QSINE
SSB 2
LB 0 Hz
GB 0
PC 1.40

F1 - Processing parameters

SI 1024
MC2 echo-antiecho
SF 100.6127690 MHz
WDW QSINE
SSB 2
LB 0 Hz
GB 0



ppm

0

20

40

60

80

100

120

140

160

ppm